



Order: (888)-282-5810 (Phone)
(818)-707-0392 (Fax)
order@abiocode.com
Web: www.Abiocode.com

LHX4 (C2) Antibody, Rabbit Polyclonal

Cat#: R1969-2a

Quantity: 100 ul

Predicted | Observed M.W.: 43 kDa

Lot#: Refer to vial

Application: WB

Uniprot ID: Q969G2

Background:

LIM homeobox protein 4 (LHX4) is a member of a large protein family which contains the LIM domain, a unique cysteine-rich zinc-binding domain. LHX4 is a transcription factor involved in the control of differentiation and development of the pituitary gland. Mutations in this gene cause combined pituitary hormone deficiency 4 [provided by RefSeq].

Other Names:

LIM/homeobox protein Lhx4, LIM homeobox protein 4, Gsh4

Source and Purity:

Rabbit polyclonal antibodies were produced by immunizing animals with a GST-fusion protein containing the C-terminal region of human LHX4. Antibodies were purified by affinity purification using immunogen.

Storage Buffer and Condition:

Supplied in 1 x PBS (pH 7.4), 100 ug/ml BSA, 40% Glycerol, 0.01% NaN₃. Store at -20 °C. Stable for 6 months from date of receipt.

Species Specificity:

Human

Tested Applications:

WB: 1:1,000-1:3,000 (detect endogenous protein*)

*: The apparent protein size on WB may be different from the calculated M.W. due to modifications.

Product Data:

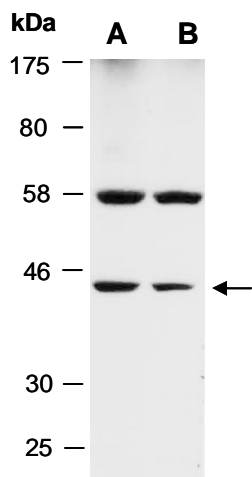


Fig 1. Western blot of total cell extracts from (A) human Jurkat, (B) human HeLa; using anti-LHX4 (C2) (R1969-2a) at RT for 2 h.