



Order: (888)-282-5810 (Phone)  
(818)-707-0392 (Fax)  
[order@abiocode.com](mailto:order@abiocode.com)  
Web: [www.Abiocode.com](http://www.Abiocode.com)

---

## PHF8 (M) Antibody, Rabbit Polyclonal

**Cat#:** R1993-1

**Quantity:** 100 ul

**Predicted | Observed M.W.:** 118 kDa

**Lot#:** Refer to vial

**Application:** WB

**Uniprot ID:** Q9UPP1

### **Background:**

PHD finger protein 8 (PHF8) is a histone lysine demethylase that preferentially acts on histones in the monomethyl or dimethyl states. PHF8 requires Fe(2+) ion, 2-oxoglutarate, and oxygen for its catalytic activity. Defects in this gene are a cause of mental retardation syndromic X-linked Siderius type (MRXSSD). Four transcript variants encoding different isoforms have been found for this gene [provided by RefSeq].

### **Other Names:**

Histone lysine demethylase PHF8, PHD finger protein 8, KIAA1111, ZNF422, JHDM1F

### **Source and Purity:**

Rabbit polyclonal antibodies were produced by immunizing animals with a GST-fusion protein containing the middle region of human PHF8. Antibodies were purified by affinity purification using immunogen.

### **Storage Buffer and Condition:**

Supplied in 1 x PBS (pH 7.4), 100 ug/ml BSA, 40% Glycerol, 0.01% NaN<sub>3</sub>. Store at -20 °C. Stable for 6 months from date of receipt.

### **Species Specificity:**

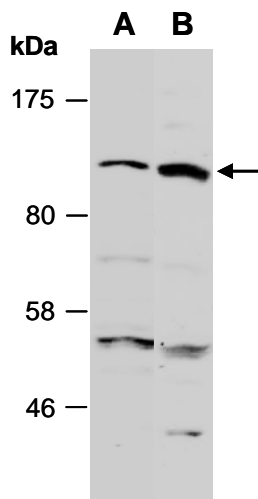
Human

### **Tested Applications:**

WB: 1:1,000-1:3,000 (detect endogenous protein\*)

\*: The apparent protein size on WB may be different from the calculated M.W. due to modifications.

**Product Data:**



**Fig 1.** Western blot of total cell extracts from (A) human HeLa, (B) human Jurkat; using anti-PHF8 (M) (R1993-1) at RT for 2 h.