



Order: (888)-282-5810 (Phone)
(818)-707-0392 (Fax)
order@abiocode.com
Web: www.Abiocode.com

PTCH1 (C) Antibody, Rabbit Polyclonal

Cat#: R2676-2

Quantity: 100 ul

Predicted | Observed M.W.: 160 | 210 kDa

Lot#: Refer to vial

Application: WB

Uniprot ID: Q13635

Background:

PTCH1 acts as a receptor for sonic hedgehog (SHH), indian hedgehog (IHH) and desert hedgehog (DHH). Associates with the smoothed protein (SMO) to transduce the hedgehog's proteins signal. PTCH1 seems to have a tumor suppressor function, as inactivation of this protein is probably a necessary, if not sufficient step for tumorigenesis. Defects in PTCH1 may cause basal cell nevus syndrome, sporadic basal cell carcinoma, holoprosencephaly type 7.

Other Names:

Protein patched homolog 1, PTC, PTC1, PTCH, BCNS, NBCCS

Source and Purity:

Rabbit polyclonal antibodies were produced by immunizing animals with a GST-fusion protein containing the C-terminal region of human PTCH1. Antibodies were purified by affinity purification using immunogen.

Storage Buffer and Condition:

Supplied in 1 x PBS (pH 7.4), 100 ug/ml BSA, 40% Glycerol, 0.01% NaN₃. Store at -20 °C. Stable for 6 months from date of receipt.

Species Specificity:

Human

Tested Applications:

WB: 1:1,000-1:3,000 (detect endogenous protein*)

*: The apparent protein size on WB may be different from the calculated M.W. due to modifications.

Product Data:

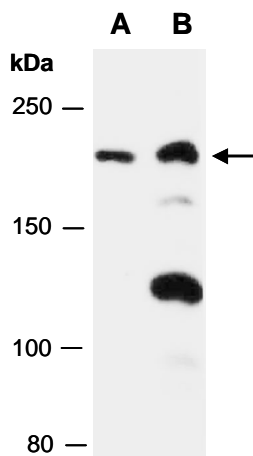


Fig 1. Western blot of total cell extracts from (A) human HeLa, (B) human Jurkat; using anti-PTCH1 (C) (R2676-2) at RT for 2 h.