



Order: (888)-282-5810 (Phone)  
(818)-707-0392 (Fax)  
[order@abiocode.com](mailto:order@abiocode.com)  
Web: [www.Abiocode.com](http://www.Abiocode.com)

---

## **PXN (C) Antibody, Rabbit Polyclonal**

**Cat#: R2997-2**

**Quantity: 100 ul**

**Predicted I Observed M.W.: 65 kDa**

**Lot#: Refer to vial**

**Application: WB**

**Uniprot ID: P49023**

### **Background:**

Paxillin (PXN) is a cytoskeletal protein involved in actin-membrane attachment at sites of cell adhesion to the extracellular matrix (focal adhesion). Alternatively spliced transcript variants encoding different isoforms have been described for PXN. These isoforms exhibit different expression pattern, and have different biochemical, as well as physiological properties (PMID:9054445) [provided by RefSeq].

### **Other Names:**

Paxillin

### **Source and Purity:**

Rabbit polyclonal antibodies were produced by immunizing animals with a GST-fusion protein containing the C-terminal region of human PXN. Antibodies were purified by affinity purification using immunogen.

### **Storage Buffer and Condition:**

Supplied in 1 x PBS (pH 7.4), 100 ug/ml BSA, 40% Glycerol, 0.01% NaN<sub>3</sub>. Store at -20 °C. Stable for 6 months from date of receipt.

### **Species Specificity:**

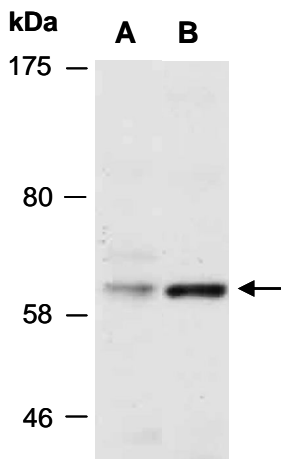
Human

### **Tested Applications:**

WB: 1:1,000-1:3,000 (detect endogenous protein\*)

\*: The apparent protein size on WB may be different from the calculated M.W. due to modifications.

**Product Data:**



**Fig 1.** Western blot of total cell extracts from (A) human HeLa, (B) human Jurkat; using anti-PXN (C) (R2997-2) at RT for 2 h.