



Order: (888)-282-5810 (Phone)
(818)-707-0392 (Fax)
order@abiocode.com
Web: www.Abiocode.com

COMP (N1) Antibody, Rabbit Polyclonal

Cat#: R1883-1

Quantity: 100 ul

Predicted | Observed M.W.: 83 kDa

Lot#: Refer to vial

Application: WB

Uniprot ID: P49747

Background:

Cartilage oligomeric matrix protein (COMP) belongs to the thrombospondin family and may play a role in the structural integrity of cartilage via its interaction with other extracellular matrix proteins such as the collagens and fibronectin. COMP can mediate the interaction of chondrocytes with the cartilage extracellular matrix through interaction with cell surface integrin receptors and could also play a role in the pathogenesis of osteoarthritis. COMP is a potent suppressor of apoptosis in both primary chondrocytes and transformed cells.

Other Names:

Cartilage oligomeric matrix protein, Thrombospondin-5, TSP5

Source and Purity:

Rabbit polyclonal antibodies were produced by immunizing animals with a GST-fusion protein containing the N-terminal region of human COMP. Antibodies were purified by affinity purification using immunogen.

Storage Buffer and Condition:

Supplied in 1 x PBS (pH 7.4), 100 ug/ml BSA, 40% Glycerol, 0.01% NaN₃. Store at -20 °C. Stable for 6 months from date of receipt.

Species Specificity:

Human, Mouse

Tested Applications:

WB: 1:1,000-1:3,000 (detect endogenous protein*)

*: The apparent protein size on WB may be different from the calculated M.W. due to modifications.

Product Data:

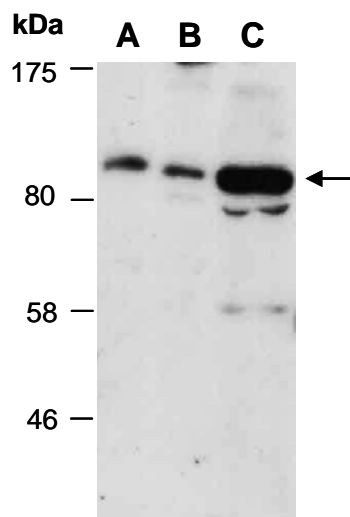


Fig 1. Western blot of total cell extracts from (A) mouse thymus, (B) human HeLa, (C) human Jurkat; using anti-COMP (N1) (R1883-1) at RT for 2 h.