



Order: (888)-282-5810 (Phone)  
(818)-707-0392 (Fax)  
[order@abiocode.com](mailto:order@abiocode.com)  
Web: [www.Abiocode.com](http://www.Abiocode.com)

---

## KDM7 (vPair™) Antibodies

**Cat#:** R0234-vp

**Lot#:** Refer to vial

**Predicted | Observed M.W.:** 107 kDa

**Uniprot ID:** Q6ZMT4

**Application:** WB, IP

**Quantity:** 50 ul KDM7 (M) (R0234-1) Rabbit Polyclonal Antibody &  
50 ul KDM7 (C) (R0234-2b) Rabbit Polyclonal Antibody

### Product Introduction:

vPair™ antibodies represent a pair of fully characterized antibodies that recognize two different regions of a target protein. The product is developed by Abiocode to address whether the signal observed truly represents the protein of interest, an often encountered issue in antibody-based assays. The use of a pair of fully characterized vPair™ antibodies in the same assay can validate signal specificity since vPair™ antibodies recognize two independent epitopes of the same protein. Different sets of vPair™ antibodies are developed at Abiocode to work with specific applications, including antibody arrays, Western blot, IP-Western, ChIP, IHC, and FACS.

### Background:

Lysine-specific histone demethylase 7 (KDM7) is a histone demethylase required for brain development. KDM7 specifically demethylates dimethylated 'Lys-9' and 'Lys-27' (H3K9me2 and H3K27me2, respectively) of histone H3 and monomethylated histone H4 'Lys-20' residue (H4K20Me1), thereby playing a central role in histone code. KDM7 specifically binds trimethylated 'Lys-4' of histone H3 (H3K4me3), affecting histone demethylase specificity: in presence of H3K4me3, it has no demethylase activity toward H3K9me2, while it has high activity toward H3K27me2.

### Other Names:

Lysine-specific demethylase 7, JmjC domain-containing histone demethylation protein 1D. JHDM1D, KIAA1718

### Source and Purity:

Rabbit polyclonal antibodies were produced by immunizing animals with GST-fusion proteins containing either the middle [KDM7 (M) (R0234-1)] or the C-terminal [KDM7 (C) (R0234-2b)] region of human KDM7. Antibodies were purified by affinity purification using immunogen.

### Storage Buffer and Condition:

Supplied in 1 x PBS (pH 7.4), 100 ug/ml BSA, 40% Glycerol, 0.01% NaN<sub>3</sub>. Store at -20 °C. Stable for 6 months from date of receipt.

---

**For research use only. Not for therapeutic or diagnostic purposes.**  
**Abiocode, Inc., 29397 Agoura Rd., Ste 106, Agoura Hills, CA 91301**

**Species Specificity:**

Human, Mouse

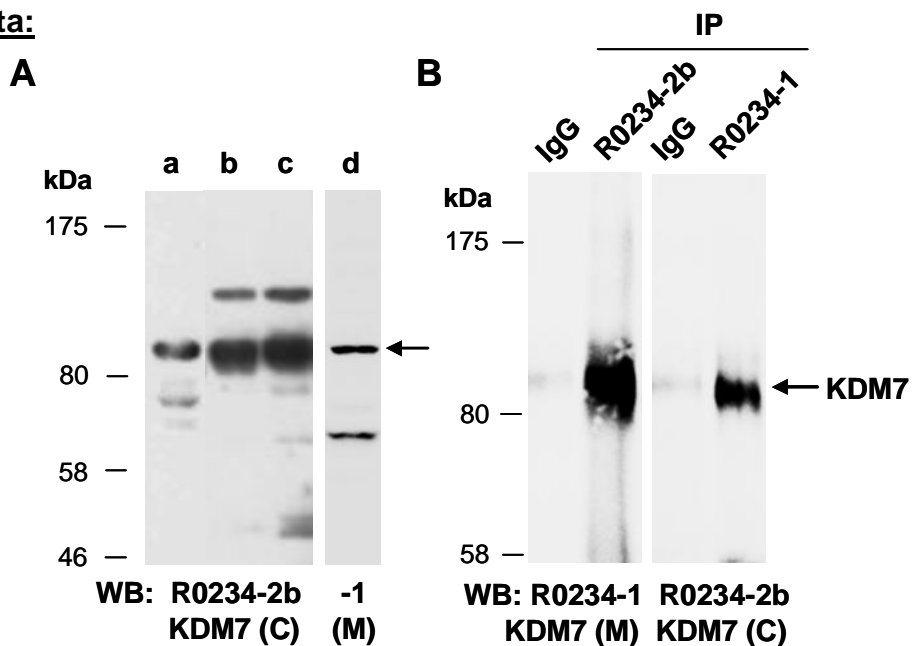
**Tested Applications:**

WB: 1:1,000-1:3,000 (detect endogenous protein\*)

IP: 1:100 - 1:200

\*: The apparent protein size on WB may be different from the calculated M.W. due to modifications.

**Product Data:**



**Fig 1. (A)** Western blot of total cell extracts from a. mouse brain, b,d. human HeLa, c. human Jurkat; using 2 independent Abs against 2 distinct regions of human KDM7 at RT for 2 h. **(B)** Total extracts from human HeLa were immunoprecipitated (IP) with IgG or 2 independent Abs against KDM7, followed by WB with the indicated Abs at RT for 2 h.