



Order: (888)-282-5810 (Phone)
(818)-707-0392 (Fax)
order@abiocode.com
Web: www.Abiocode.com

CD22 (C) Antibody, Rabbit Polyclonal

Cat#: R0990-2

Quantity: 100 ul

Predicted | Observed M.W.: 95 kDa

Lot#: Refer to vial

Application: WB

Uniprot ID: P20273

Background:

B-cell receptor CD22 is a single-pass type I membrane protein that mediates B-cell B-cell interactions. CD22 may be involved in the localization of B-cells in lymphoid tissues. CD22 binds to sialylated glycoproteins; one of which is CD45. Upon ligand induced tyrosine phosphorylation in the immune response, CD22 seems to be involved in regulation of B-cell antigen receptor signaling. CD22 plays a role in positive regulation through interaction with Src family tyrosine kinases and may also act as an inhibitory receptor by recruiting cytoplasmic phosphatases via their SH2 domains that block signal transduction through dephosphorylation of signaling molecules.

Other Names:

B-cell receptor CD22, B-lymphocyte cell adhesion molecule, BL-CAM, Sialic acid-binding Ig-like lectin 2, Siglec-2, T-cell surface antigen Leu-14, CD22, SIGLEC2

Source and Purity:

Rabbit polyclonal antibodies were produced by immunizing animals with a GST-fusion protein containing the C-terminal region of human CD22. Antibodies were purified by affinity purification using immunogen.

Storage Buffer and Condition:

Supplied in 1 x PBS (pH 7.4), 100 ug/ml BSA, 40% Glycerol, 0.01% NaN₃. Store at -20 °C. Stable for 6 months from date of receipt.

Species Specificity:

Human

Tested Applications:

WB: 1:1,000-1:3,000 (detect endogenous protein*)

*: The apparent protein size on WB may be different from the calculated M.W. due to modifications.

Product Data:

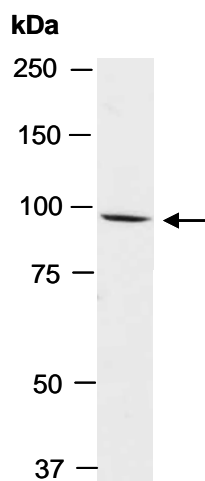


Fig 1. Western blot of total cell extracts from human HeLa; using anti-CD22 (C) (R0990-2) at RT for 2 h.