



Order: (888)-282-5810 (Phone)  
(818)-707-0392 (Fax)  
[order@abiocode.com](mailto:order@abiocode.com)  
Web: [www.Abiocode.com](http://www.Abiocode.com)

---

## PELI1 (N) Antibody, Rabbit Polyclonal

**Cat#:** R1789-1

**Quantity:** 100 ul

**Predicted | Observed M.W.:** 46 | 54 kDa

**Lot#:** Refer to vial

**Application:** WB

**Uniprot ID:** Q96FA3

### **Background:**

E3 ubiquitin-protein ligase pellino homolog 1 (PELI1) is a E3 ubiquitin ligase catalyzing the covalent attachment of ubiquitin moieties onto substrate proteins. PELI1 is involved in the TLR and IL-1 signaling pathways via interaction with the complex containing IRAK kinases and TRAF6. It mediates 'Lys-63'-linked polyubiquitination of IRAK1 allowing subsequent NF-kappa-B activation.

### **Other Names:**

E3 ubiquitin-protein ligase pellino homolog 1, Pellino-1, Pellino-related intracellular-signaling molecule, PRISM

### **Source and Purity:**

Rabbit polyclonal antibodies were produced by immunizing animals with a GST-fusion protein containing the C-terminal region of human PELI1. Antibodies were purified by affinity purification using immunogen.

### **Storage Buffer and Condition:**

Supplied in 1 x PBS (pH 7.4), 100 ug/ml BSA, 40% Glycerol, 0.01% NaN<sub>3</sub>. Store at -20 °C. Stable for 6 months from date of receipt.

### **Species Specificity:**

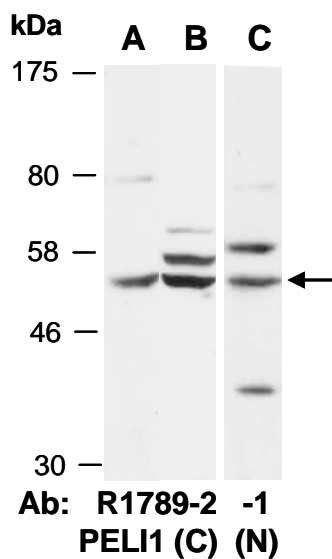
Human

### **Tested Applications:**

WB: 1:1,000-1:3,000 (detect endogenous protein\*)

\*: The apparent protein size on WB may be different from the calculated M.W. due to modifications.

**Product Data:**



**Fig 1.** Western blot of total cell extracts from (A) mouse brain, (B) human Jurkat, (C) human HeLa; using 2 independent Abs against 2 distinct regions of human PELI1 at RT for 2 h.