



Order: (888)-282-5810 (Phone)
(818)-707-0392 (Fax)
order@abiocode.com
Web: www.Abiocode.com

PELI1 (C) Antibody, Rabbit Polyclonal

Cat#: R1789-2

Quantity: 100 ul

Predicted | Observed M.W.: 46 | 54 kDa

Lot#: Refer to vial

Application: WB

Uniprot ID: Q96FA3

Background:

E3 ubiquitin-protein ligase pellino homolog 1 (PELI1) is a E3 ubiquitin ligase catalyzing the covalent attachment of ubiquitin moieties onto substrate proteins. PELI1 is involved in the TLR and IL-1 signaling pathways via interaction with the complex containing IRAK kinases and TRAF6. It mediates 'Lys-63'-linked polyubiquitination of IRAK1 allowing subsequent NF-kappa-B activation.

Other Names:

E3 ubiquitin-protein ligase pellino homolog 1, Pellino-1, Pellino-related intracellular-signaling molecule, PRISM

Source and Purity:

Rabbit polyclonal antibodies were produced by immunizing animals with a GST-fusion protein containing the C-terminal region of human PELI1. Antibodies were purified by affinity purification using immunogen.

Storage Buffer and Condition:

Supplied in 1 x PBS (pH 7.4), 100 ug/ml BSA, 40% Glycerol, 0.01% NaN₃. Store at -20 °C. Stable for 6 months from date of receipt.

Species Specificity:

Human, Mouse

Tested Applications:

WB: 1:1,000-1:3,000 (detect endogenous protein*)

*: The apparent protein size on WB may be different from the calculated M.W. due to modifications.

Product Data:

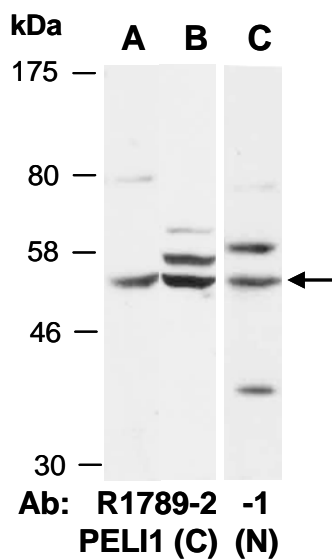


Fig 1. Western blot of total cell extracts from (A) mouse brain, (B) human Jurkat, (C) human HeLa; using 2 independent Abs against 2 distinct regions of human PELI1 at RT for 2 h.