



Order: (888)-282-5810 (Phone)  
(818)-707-0392 (Fax)  
[order@abiocode.com](mailto:order@abiocode.com)  
Web: [www.Abiocode.com](http://www.Abiocode.com)

---

## **BCL11B (C) Antibody, Rabbit Polyclonal**

**Cat#: R2122-2**

**Quantity: 100 ul**

**Predicted | Observed M.W.: 96 kDa**

**Lot#: Refer to vial**

**Application: WB**

**Uniprot ID: Q9C0K0**

### **Background:**

B-cell lymphoma/leukemia 11B (BCL11B) is a C2H2-type zinc finger protein and is closely related to BCL11A, a gene whose translocation may be associated with B-cell malignancies. The specific function of this gene has not yet been determined. Two alternatively spliced transcript variants, which encode distinct isoforms, have been reported [provided by RefSeq].

### **Other Names:**

B-cell lymphoma/leukemia 11B, BCL-11B, B-cell CLL/lymphoma 11B, COUP-TF-interacting protein 2, Radiation-induced tumor suppressor gene 1 protein, hRit1, CTIP2, RIT1, CTIP-2, hRIT1-alpha, ZNF856B

### **Source and Purity:**

Rabbit polyclonal antibodies were produced by immunizing animals with a GST-fusion protein containing the C-terminal region of human BCL11B. Antibodies were purified by affinity purification using immunogen.

### **Storage Buffer and Condition:**

Supplied in 1 x PBS (pH 7.4), 100 ug/ml BSA, 40% Glycerol, 0.01% NaN<sub>3</sub>. Store at -20 °C. Stable for 6 months from date of receipt.

### **Species Specificity:**

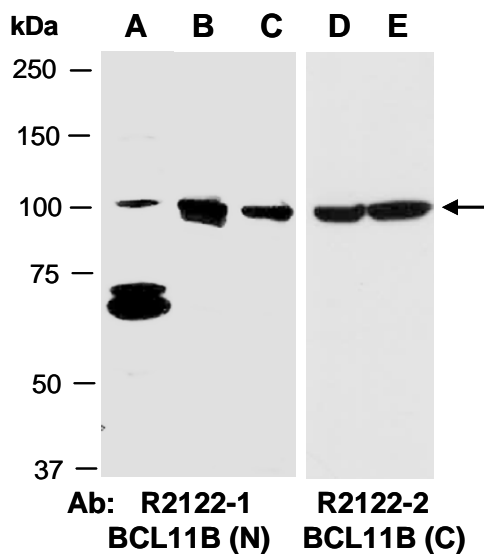
Human

### **Tested Applications:**

WB: 1:1,000-1:3,000 (detect endogenous protein\*)

\*: The apparent protein size on WB may be different from the calculated M.W. due to modifications.

**Product Data:**



**Fig 1.** Western blot of total cell extracts from (A) mouse brain, (B, D) human HeLa, (C, E) human Jurkat; using 2 independent Abs against 2 distinct regions of human BCL11B at RT for 2 h.