



Order: (888)-282-5810 (Phone)
(818)-707-0392 (Fax)
order@abiocode.com
Web: www.Abiocode.com

CRTC1 (N) Antibody, Rabbit Polyclonal

Cat#: R2258-1

Quantity: 100 ul

Predicted | Observed M.W.: 67 kDa

Lot#: Refer to vial

Application: WB

Uniprot ID: Q6UUV9

Background:

CREB-regulated transcription coactivator 1 (CRTC1) is a transcriptional coactivator for CREB1, which activates transcription through both consensus and variant cAMP response element (CRE) sites. CRTC1 regulates the expression of specific CREB-activated genes such as the steroidogenic gene, StAR. CRTC1 also acts as a coactivator in the SIK/TORC signaling pathway independent of CREB1 'Ser-133' phosphorylation. CRTC1 is also a potent coactivator of PGC1alpha and inducer of mitochondrial biogenesis in muscle cells. In addition, CRTC1 is a coactivator for TAX activation of the human T-cell leukemia virus type 1 (HTLV-1) long terminal repeats (LTR). In the hippocampus, CRTC1 is involved in late-phase long-term potentiation (L-LTP) maintenance at the Schaffer collateral-CA1 synapses, and may be required for dendritic growth of developing cortical neurons. CRTC1 is highly expressed in adult and fetal brain.

Other Names:

CREB-regulated transcription coactivator 1, Mucoepidermoid carcinoma translocated protein 1, Transducer of regulated cAMP response element-binding protein 1, TORC-1, Transducer of CREB protein 1, KIAA0616, MECT1, TORC1, WAMTP1

Source and Purity:

Rabbit polyclonal antibodies were produced by immunizing animals with a GST-fusion protein containing the N-terminal region of human CRTC1. Antibodies were purified by affinity purification using immunogen.

Storage Buffer and Condition:

Supplied in 1 x PBS (pH 7.4), 100 ug/ml BSA, 40% Glycerol, 0.01% NaN₃. Store at -20 °C. Stable for 6 months from date of receipt.

Tested Applications:

WB: 1:1,000-1:3,000 (detect endogenous protein*)

*: The apparent protein size on WB may be different from the calculated M.W. due to modifications.

Species Specificity:

Human, Mouse

Product Data:

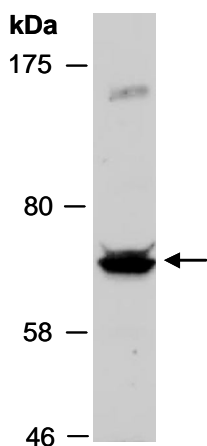


Fig 1. Western blot of total cell extracts from mouse brain; using anti-CRTC1 (N) (R2258-1) at RT for 2 h.