



Order: (888)-282-5810 (Phone)
(818)-707-0392 (Fax)
order@abiocode.com
Web: www.Abiocode.com

PPP2R1A (N) Antibody, Rabbit Polyclonal

Cat#: R2674-1

Quantity: 100 ul

Predicted | Observed M.W.: 65 | 72 kDa

Lot#: Refer to vial

Application: WB

Uniprot ID: P30153

Background:

Serine/threonine-protein phosphatase 2A 65 kDa regulatory subunit A alpha isoform (PPP2R1A) belongs to the phosphatase 2A regulatory subunit A family. The PR65 subunit of protein phosphatase 2A serves as a scaffolding molecule to coordinate the assembly of the catalytic subunit and a variable regulatory B subunit. PPP2R1A is required for proper chromosome segregation and for centromeric localization of SGOL1 in mitosis.

Other Names:

Serine/threonine-protein phosphatase 2A 65 kDa regulatory subunit A alpha isoform, Medium tumor antigen-associated 61 kDa protein, PP2A subunit A isoform PR65-alpha, PP2A subunit A isoform R1-alpha

Source and Purity:

Rabbit polyclonal antibodies were produced by immunizing animals with a GST-fusion protein containing the N-terminal region of human PPP2R1A. Antibodies were purified by affinity purification using immunogen.

Storage Buffer and Condition:

Supplied in 1 x PBS (pH 7.4), 100 ug/ml BSA, 40% Glycerol, 0.01% NaN₃. Store at -20 °C. Stable for 6 months from date of receipt.

Species Specificity:

Human, Mouse

Tested Applications:

WB: 1:1,000-1:3,000 (detect endogenous protein*)

*: The apparent protein size on WB may be different from the calculated M.W. due to modifications.

Product Data:

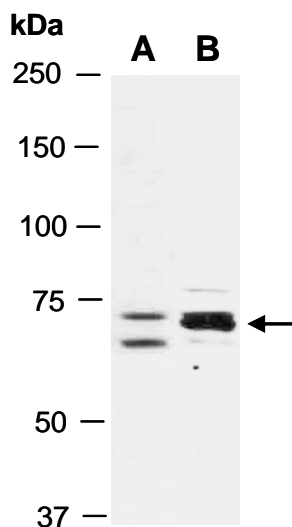


Fig 1. Western blot of total cell extracts from (A) mouse thymus, (B) human Jurkat; using anti-PPP2R1A (N) (R2674-1) at RT for 2 h.