



Order: (888)-282-5810 (Phone)
(818)-707-0392 (Fax)
order@abiocode.com
Web: www.Abiocode.com

E2F3 (C) Antibody, Rabbit Polyclonal

Cat#: R2999-2

Quantity: 100 ul

Predicted | Observed M.W.: 49 | 60 kDa

Lot#: Refer to vial

Application: WB

Uniprot ID: O00716

Background:

Transcription factor E2F3 is a member of the E2F family of transcription factors. The E2F family plays a crucial role in the control of cell cycle and action of tumor suppressor proteins and is also a target of the transforming proteins of small DNA tumor viruses. The E2F proteins contain several evolutionarily conserved domains found in most members of the family. These domains include a DNA binding domain, a dimerization domain which determines interaction with the differentiation regulated transcription factor proteins (DP), a transactivation domain enriched in acidic amino acids, and a tumor suppressor protein association domain which is embedded within the transactivation domain. E2F3 and another 2 members, E2F1 and E2F2, have an additional cyclin binding domain. E2F3 binds specifically to retinoblastoma protein pRB in a cell-cycle dependent manner. Two transcript variants encoding different isoforms have been found for this gene [provided by RefSeq].

Other Names:

Transcription factor E2F3, E2F-3, KIAA0075

Source and Purity:

Rabbit polyclonal antibodies were produced by immunizing animals with a GST-fusion protein containing the C-terminal region of human E2F3. Antibodies were purified by affinity purification using immunogen.

Storage Buffer and Condition:

Supplied in 1 x PBS (pH 7.4), 100 ug/ml BSA, 40% Glycerol, 0.01% NaN₃. Store at -20 °C. Stable for 6 months from date of receipt.

Tested Applications:

WB: 1:1,000-1:3,000 (detect endogenous protein*)

*: The apparent protein size on WB may be different from the calculated M.W. due to modifications.

Species Specificity:

Human

Product Data:

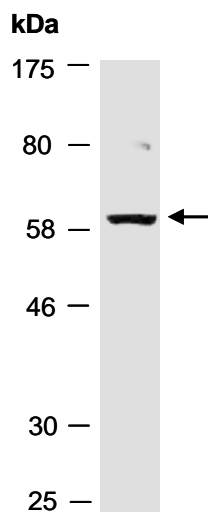


Fig 1. Western blot of total cell extracts from human HeLa; using anti-E2F3 (C) (R2999-2) at RT for 2 h.