



Order: (888)-282-5810 (Phone)  
(818)-707-0392 (Fax)  
[order@abiocode.com](mailto:order@abiocode.com)  
Web: [www.Abiocode.com](http://www.Abiocode.com)

---

## **CAGE1 (N) Antibody, Rabbit Polyclonal**

**Cat#: R2009-1**

**Quantity: 100 ul**

**Predicted | Observed MW: 90 | 110-120 kDa**

**Lot#: Refer to vial**

**Application: WB, IP**

**Uniprot ID: Q8TC20**

### **Background:**

Cancer-associated gene 1 protein (CAGE1) is initially identified as a cancer/testis antigen. CAGE1 is mainly a nuclear protein that displays high expression in testis among normal tissues, and wide expression in various cancer tissues and cancer cell lines. CAGE1 may be associated with tumor progression, while the exact function of CAGE-1 is not well understood.

### **Other Names:**

Cancer-associated gene 1 protein, CAGE-1, Cancer/testis antigen 3, CT3, CTAG3

### **Source and Purity:**

Rabbit polyclonal antibodies were produced by immunizing animals with a GST-fusion protein containing the N-terminal region of human CAGE1. Antibodies were purified by affinity purification using immunogen.

### **Storage Buffer and Condition:**

Supplied in 1 x PBS (pH 7.4), 100 ug/ml BSA, 40% Glycerol, 0.01% NaN<sub>3</sub>. Store at -20 °C. Stable for 6 months from date of receipt.

### **Species Specificity:**

Human

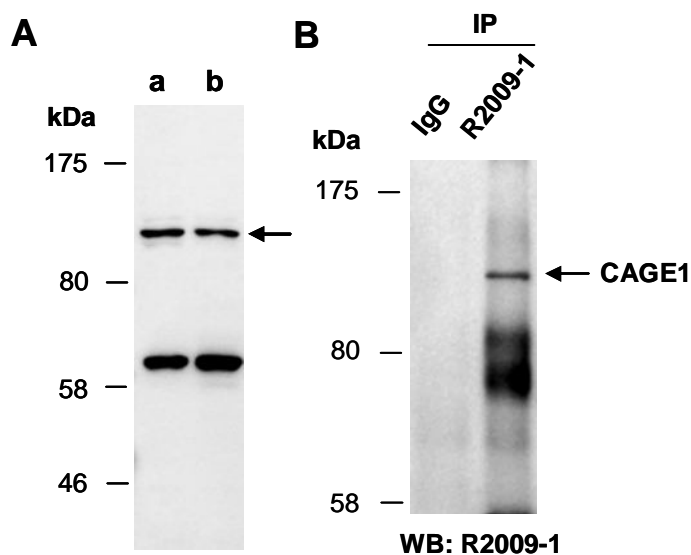
### **Tested Applications:**

WB: 1:1,000-1:3,000 (detect endogenous protein\*)

IP: 1:100 - 1:200

\*: The apparent protein size on WB may be different from the calculated M.W. due to modifications.

**Product Data:**



**Fig 1. (A)** Western blot of total cell extracts from a. human HeLa, b. human Jurkat; using anti-CAGE1 (N) (R2009-1) at RT for 2 h. **(B)** IP-WB. Immunoprecipitation (IP) was performed with HeLa extracts with IgG or anti-CAGE1 (N) (R2009-1), followed by WB with the same Ab.