



Order: (888)-282-5810 (Phone)
(818)-707-0392 (Fax)
order@abiocode.com
Web: www.Abiocode.com

LEMD3 (N) Antibody, Rabbit Polyclonal

Cat#: R0813-1

Quantity: 100 ul

Predicted | Observed MW: 100 kDa

Lot#: Refer to vial

Application: WB, IP

Uniprot ID: Q9Y2U8

Background:

Inner nuclear membrane protein Man1 (LEMD3) is a multi-pass membrane protein that can function as a specific repressor of TGF-beta, activin, and BMP signaling through its interaction with the R-SMAD proteins. LEMD3 antagonizes TGF-beta-induced cell proliferation arrest. Defects in LEMD3 are the cause of Buschke-Ollendorff syndrome (BOS) and of melorheostosis (MEL).

Other Names:

Inner nuclear membrane protein Man1, LEM domain-containing protein 3, MAN1

Source and Purity:

Rabbit polyclonal antibodies were produced by immunizing animals with a GST-fusion protein containing the N-terminal region of human LEMD3. Antibodies were purified by affinity purification using immunogen.

Storage Buffer and Condition:

Supplied in 1 x PBS (pH 7.4), 100 ug/ml BSA, 40% Glycerol, 0.01% NaN₃. Store at -20 °C. Stable for 6 months from date of receipt.

Species Specificity:

Human, Mouse

Tested Applications:

WB: 1:1,000-1:3,000 (detect endogenous protein*)

IP: 1:100 - 1:200

*: The apparent protein size on WB may be different from the calculated M.W. due to modifications.

Product Data:

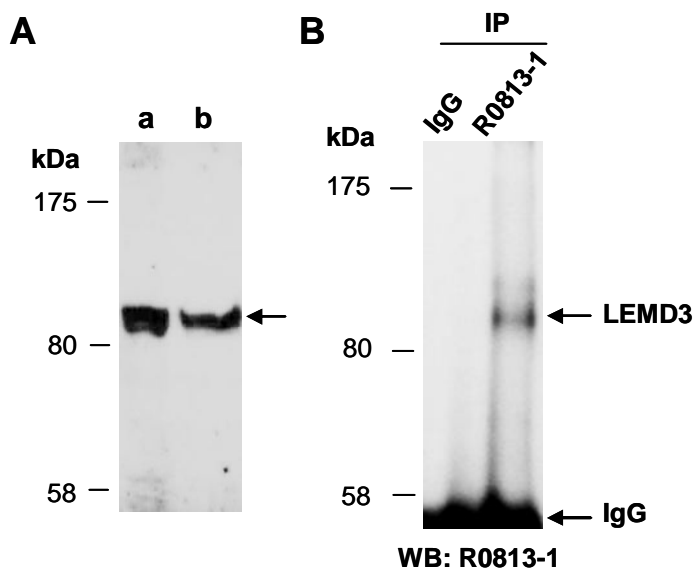


Fig 1. (A) Western blot (WB) of total cell extracts from a. mouse thymus, b. human HeLa; using anti-LEM3 (N) (R0813-1) at RT for 2 h. **(B)** IP-WB. Immunoprecipitation (IP) was performed with mouse thymus extracts with IgG or anti-LEM3 (N) (R0813-1), followed by WB with the same Ab.