



Order: (888)-282-5810 (Phone)
(818)-707-0392 (Fax)
order@abiocode.com
Web: www.Abiocode.com

CAGE1 (C) Antibody, Rabbit Polyclonal

Cat#: R2009-2

Quantity: 100 ul

Predicted | Observed MW: 90 | 110-120 kDa

Lot#: Refer to vial

Application: WB, IP

Uniprot ID: Q8TC20

Background:

Cancer-associated gene 1 protein (CAGE1) is initially identified as a cancer/testis antigen. CAGE1 is mainly a nuclear protein that displays high expression in testis among normal tissues, and wide expression in various cancer tissues and cancer cell lines. CAGE1 may be associated with tumor progression, while the exact function of CAGE-1 is not well understood.

Other Names:

Cancer-associated gene 1 protein, CAGE-1, Cancer/testis antigen 3, CT3, CTAG3

Source and Purity:

Rabbit polyclonal antibodies were produced by immunizing animals with a GST-fusion protein containing the C-terminal region of human CAGE1. Antibodies were purified by affinity purification using immunogen.

Storage Buffer and Condition:

Supplied in 1 x PBS (pH 7.4), 100 ug/ml BSA, 40% Glycerol, 0.01% NaN₃. Store at -20 °C. Stable for 6 months from date of receipt.

Species Specificity:

Human, Mouse

Tested Applications:

WB: 1:1,000-1:3,000 (detect endogenous protein*)

IP: 1:100-1:200

*: The apparent protein size on WB may be different from the calculated M.W. due to modifications.

Product Data:

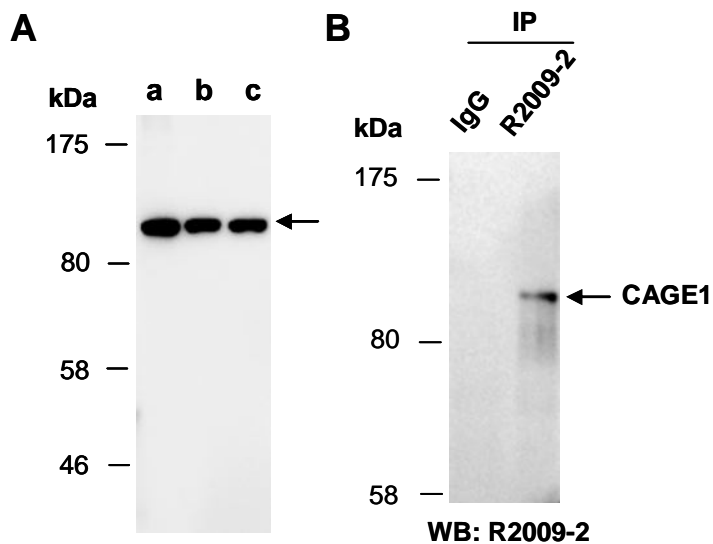


Fig 1. (A) Western blot (WB) of total cell extracts from a. human HeLa, b. human Jurkat, c. mouse thymus; using anti-CAGE1 (C) (R2009-2) at RT for 2 h. **(B)** IP-WB. Immunoprecipitation (IP) was performed with HeLa extracts with IgG or anti-CAGE1 (C) (R2009-2), followed by WB with the same Ab.