



Order: (888)-282-5810 (Phone)  
(818)-707-0392 (Fax)  
[order@abiocode.com](mailto:order@abiocode.com)  
Web: [www.Abiocode.com](http://www.Abiocode.com)

---

## **KDM5A (N) Antibody, Rabbit Polyclonal**

**Cat#: R0159-2**

**Quantity: 100 ul**

**Predicted | Observed M.W.: 192 | 220 kDa**

**Lot#: Refer to vial**

**Application: WB**

**Uniprot ID: P29375**

### **Background:**

Lysine (K)-specific demethylase 5A (KDM5A) is a ubiquitously expressed nuclear protein. It is a histone demethylase that specifically demethylates 'Lys-4' of histone H3. It can bind directly to a number of different proteins, including retinoblastoma protein which regulates cell proliferation, and rhombotin-2 which functions in erythropoiesis and in T-cell leukemogenesis. It may stimulate transcription mediated by nuclear receptors.

### **Other Names:**

JARID1A, RBBP2, RBBP-2, RBP2, Histone demethylase JARID1A, Jumonji/ARID domain-containing protein 1A, Retinoblastoma-binding protein 2,

### **Source and Purity:**

Rabbit polyclonal antibodies were produced by immunizing animals with a GST-fusion protein containing the N-terminal region of human KDM5A. Antibodies were purified by affinity purification using immunogen.

### **Storage Buffer and Condition:**

Supplied in 1 x PBS (pH 7.4), 100 ug/ml BSA, 40% Glycerol, 0.01% NaN<sub>3</sub>. Store at -20 °C. Stable for 6 months from date of receipt.

### **Species Specificity:**

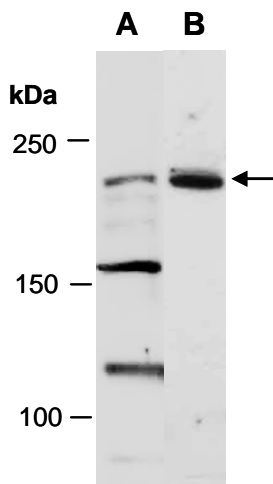
Human, Mouse

### **Tested Applications:**

WB: 1:1,000-1:3,000 (detect endogenous protein\*)

\*: The apparent protein size on WB may be different from the calculated M.W. due to modifications.

**Product Data:**



**Fig 1.** Western blot of total cell extracts from (A) mouse thymus, (B) human Jurkat; using anti-KDM5A (N) (R0159-2) at RT for 2 h.