



Order: (888)-282-5810 (Phone)
(818)-707-0392 (Fax)
order@abiocode.com
Web: www.Abiocode.com

SEN6 (N) Antibody, Rabbit Polyclonal

Cat#: R0726-1

Quantity: 100 ul

Predicted | Observed M.W.: 126 kDa

Lot#: Refer to vial

Application: WB

Uniprot ID: Q9GZR1

Background:

Sentrin-specific protease 6 (SEN6) belongs to the peptidase C48 family and is a protease that deconjugates SUMO1, SUMO2 and SUMO3 from targeted proteins. SEN6 processes preferentially poly-SUMO2 and poly-SUMO3 chains, but does not efficiently process SUMO1, SUMO2 and SUMO3 precursors. Additionally, SEN6 deconjugates SUMO1 from RXRA, leading to transcriptional activation. SEN6 is also involved in chromosome alignment and spindle assembly, by regulating the kinetochore CENPH-CENPI-CENPK complex.

Other Names:

Sentrin-specific protease 6, SUMO-1-specific protease 1, Sentrin/SUMO-specific protease SEN6, KIAA0797, SSP1, SUSP1

Source and Purity:

Rabbit polyclonal antibodies were produced by immunizing animals with a GST-fusion protein containing the N-terminal region of human SEN6. Antibodies were purified by affinity purification using immunogen.

Storage Buffer and Condition:

Supplied in 1 x PBS (pH 7.4), 100 ug/ml BSA, 40% Glycerol, 0.01% NaN₃. Store at -20 °C. Stable for 6 months from date of receipt.

Species Specificity:

Human, Mouse

Tested Applications:

WB: 1:1,000-1:3,000 (detect endogenous protein*)

*: The apparent protein size on WB may be different from the calculated M.W. due to modifications.

Product Data:

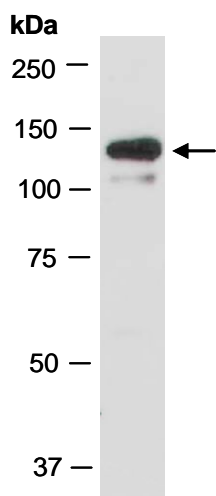


Fig 1. Western blot of total cell extracts from mouse brain, using anti-SEN6 (N) (R0726-1) at RT for 2 h.