



Order: (888)-282-5810 (Phone)
(818)-707-0392 (Fax)
order@abiocode.com
Web: www.Abiocode.com

ADCY2 (N) Antibody, Rabbit Polyclonal

Cat#: R0739-1

Quantity: 100 ul

Predicted | Observed M.W.: 124 kDa

Lot#: Refer to vial

Application: WB

Uniprot ID: Q08462

Background:

Adenylate cyclase type 2 (ADCY2) is a member of the family of adenylate cyclases, which are membrane-associated enzymes that catalyze the formation of the secondary messenger cyclic adenosine monophosphate (cAMP). This enzyme is insensitive to Ca(2+)/calmodulin, and is stimulated by the G protein beta and gamma subunit complex [provided by RefSeq].

Other Names:

Adenylate cyclase type 2, ATP pyrophosphate-lyase 2, Adenylate cyclase type II, Adenylyl cyclase 2, AC2, HBAC2, KIAA1060

Source and Purity:

Rabbit polyclonal antibodies were produced by immunizing animals with a GST-fusion protein containing the N-terminal region of human ADCY2. Antibodies were purified by affinity purification using immunogen.

Storage Buffer and Condition:

Supplied in 1 x PBS (pH 7.4), 100 ug/ml BSA, 40% Glycerol, 0.01% NaN₃. Store at -20 °C. Stable for 6 months from date of receipt.

Species Specificity:

Human, Mouse

Tested Applications:

WB: 1:1,000-1:3,000 (detect endogenous protein*)

*: The apparent protein size on WB may be different from the calculated M.W. due to modifications.

Product Data:

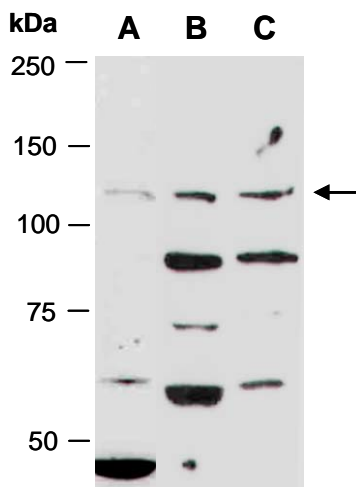


Fig 1. Western blot of total cell extracts from (A) mouse brain, (B) human HeLa, (C) human Jurkat; using anti-ADCY2 (N) (R0739-1) at RT for 2 h.