



Order: (888)-282-5810 (Phone)  
(818)-707-0392 (Fax)  
[order@abiocode.com](mailto:order@abiocode.com)  
Web: [www.Abiocode.com](http://www.Abiocode.com)

---

## **PDE3B (N) Antibody, Rabbit Polyclonal**

**Cat#: R1578-1a**

**Quantity: 100 ul**

**Predicted | Observed M.W.: 124 | 150 kDa**

**Lot#: Refer to vial**

**Application: WB**

**Uniprot ID: Q13370**

### **Background:**

cGMP-inhibited 3',5'-cyclic phosphodiesterase B (PDE3B) is a multi-pass membrane protein that belongs to the cyclic nucleotide phosphodiesterase family. PDE3B is a cyclic nucleotide phosphodiesterase with a dual-specificity for the second messengers cAMP and cGMP, which are key regulators of many important physiological processes. PDE3B assembles a signaling complex through simultaneous binding to RAPGEF3 and PIK3R6, in which the PI3K gamma complex is activated by RAPGEF3. PDE3B may play a role in fat metabolism and angiogenesis.

### **Other Names:**

cGMP-inhibited 3',5'-cyclic phosphodiesterase B, CGIPDE1, CGIP1, Cyclic GMP-inhibited phosphodiesterase B, CGI-PDE B, HcGIP1

### **Source and Purity:**

Rabbit polyclonal antibodies were produced by immunizing animals with a GST-fusion protein containing the N-terminal region of human PDE3B. Antibodies were purified by affinity purification using immunogen.

### **Storage Buffer and Condition:**

Supplied in 1 x PBS (pH 7.4), 100 ug/ml BSA, 40% Glycerol, 0.01% NaN<sub>3</sub>. Store at -20 °C. Stable for 6 months from date of receipt.

### **Species Specificity:**

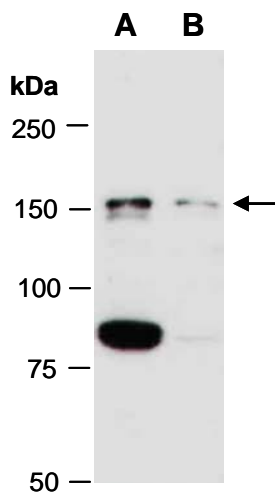
Human

### **Tested Applications:**

WB: 1:1,000-1:3,000 (detect endogenous protein\*)

\*: The apparent protein size on WB may be different from the calculated M.W. due to modifications.

**Product Data:**



**Fig 1.** Western blot of total cell extracts from (A) human HeLa, (B) human Jurkat; using anti- PDE3B (N) (R1578-1a) at RT for 2 h.