



Order: (888)-282-5810 (Phone)
(818)-707-0392 (Fax)
order@abiocode.com
Web: www.Abiocode.com

PDE3B (N) Antibody, Rabbit Polyclonal

Cat#: R1578-1b

Quantity: 100 ul

Predicted | Observed M.W.: 124 | 130 kDa

Lot#: Refer to vial

Application: WB

Uniprot ID: Q13370

Background:

cGMP-inhibited 3',5'-cyclic phosphodiesterase B (PDE3B) is a multi-pass membrane protein that belongs to the cyclic nucleotide phosphodiesterase family. PDE3B is a cyclic nucleotide phosphodiesterase with a dual-specificity for the second messengers cAMP and cGMP, which are key regulators of many important physiological processes. PDE3B assembles a signaling complex through simultaneous binding to RAPGEF3 and PIK3R6, in which the PI3K gamma complex is activated by RAPGEF3. PDE3B may play a role in fat metabolism and angiogenesis.

Other Names:

cGMP-inhibited 3',5'-cyclic phosphodiesterase B, CGIPDE1, CGIP1, Cyclic GMP-inhibited phosphodiesterase B, CGI-PDE B, HcGIP1

Source and Purity:

Rabbit polyclonal antibodies were produced by immunizing animals with a GST-fusion protein containing the N-terminal region of human PDE3B. Antibodies were purified by affinity purification using immunogen.

Storage Buffer and Condition:

Supplied in 1 x PBS (pH 7.4), 100 ug/ml BSA, 40% Glycerol, 0.01% NaN₃. Store at -20 °C. Stable for 6 months from date of receipt.

Species Specificity:

Human

Tested Applications:

WB: 1:1,000-1:3,000 (detect endogenous protein*)

*: The apparent protein size on WB may be different from the calculated M.W. due to modifications.

Product Data:

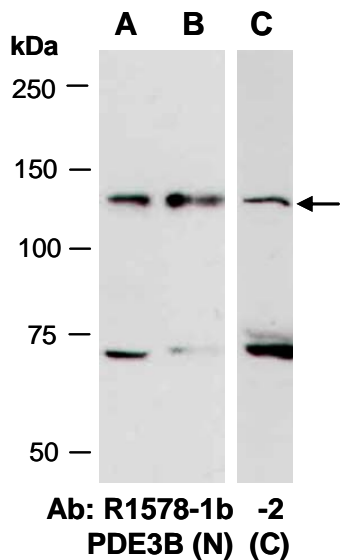


Fig 1. Western blot of total cell extracts from (A, C) human HeLa, (B) human Jurkat; using 2 independent Abs against 2 distinct regions of human PDE3B at RT for 2 h.