



Order: (888)-282-5810 (Phone)
(818)-707-0392 (Fax)
order@abiocode.com
Web: www.Abiocode.com

LATS1 (N) Antibody, Rabbit Polyclonal

Cat#: R1986-1

Quantity: 100 ul

Predicted | Observed M.W.: 127 | 150 kDa

Lot#: Refer to vial

Application: WB

Uniprot ID: O95835

Background:

Large tumor suppressor homolog 1 (LATS1) is a putative serine/threonine kinase that localizes to the mitotic apparatus and complexes with cell cycle controller CDC2 kinase in early mitosis. LATS1 is phosphorylated in a cell-cycle dependent manner, with late prophase phosphorylation remaining through metaphase. The N-terminal region of the protein binds to CDC2 to form a complex showing reduced H1 histone kinase activity, indicating a role as a negative regulator of CDC2/cyclin A. In addition, the C-terminal kinase domain binds to its own N-terminal region, suggesting potential negative regulation through interference with complex formation via intramolecular binding.

Biochemical and genetic data suggest a role of LATS1 as a tumor suppressor. This is supported by studies in knockout mice showing development of soft-tissue sarcomas, ovarian stromal cell tumors and a high sensitivity to carcinogenic treatments. Two protein-coding transcripts and one non-protein coding transcript have been found for the LATS1 gene [provided by RefSeq].

Other Names:

Serine/threonine-protein kinase LATS1, Large tumor suppressor homolog 1, WARTS protein kinase, h-warts, WARTS

Source and Purity:

Rabbit polyclonal antibodies were produced by immunizing animals with a GST-fusion protein containing the N-terminal region of human LATS1. Antibodies were purified by affinity purification using immunogen.

Storage Buffer and Condition:

Supplied in 1 x PBS (pH 7.4), 100 ug/ml BSA, 40% Glycerol, 0.01% NaN₃. Store at -20 °C. Stable for 6 months from date of receipt.

Tested Applications:

WB: 1:1,000-1:3,000 (detect endogenous protein*)

*: The apparent protein size on WB may be different from the calculated M.W. due to modifications.

Species Specificity:

Human

Product Data:

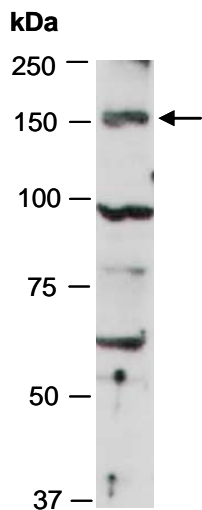


Fig 1. Western blot of total cell extracts from human HeLa, using anti-LATS1 (N) (R1986-1) at RT for 2 h.