



Order: (888)-282-5810 (Phone)
(818)-707-0392 (Fax)
order@abiocode.com
Web: www.Abiocode.com

KDM4D (C2) Antibody, Rabbit Polyclonal

Cat#: R0912-2

Quantity: 100 ul

Predicted | Observed MW: 59 | 65 kDa

Lot#: Refer to vial

Application: WB

Uniprot ID: Q6B0I6

Background:

Lysine-specific demethylase 4D (KDM4D) is a nuclear protein that belongs to the JHDM3 histone demethylase family. KDM4D is a histone demethylase that specifically demethylates 'Lys-9' of histone H3, thereby playing a central role in histone code. KDM4D does not demethylate histone H3 'Lys-4', H3 'Lys-27', H3 'Lys-36' or H4 'Lys-20'. KDM4D demethylates both di- and trimethylated H3 'Lys-9' residue, while it has no activity on monomethylated residues.

Other Names:

Lysine-specific demethylase 4D, JmjC domain-containing histone demethylation protein 3D, Jumonji domain-containing protein 2D, JHDM3D, JMJD2D

Source and Purity:

Rabbit polyclonal antibodies were produced by immunizing animals with a GST-fusion protein containing the C-terminal region of human KDM4D. Antibodies were purified by affinity purification using immunogen.

Storage Buffer and Condition:

Supplied in 1 x PBS (pH 7.4), 100 ug/ml BSA, 40% Glycerol, 0.01% NaN₃. Store at -20 °C. Stable for 6 months from date of receipt.

Species Specificity:

Human

Tested Applications:

WB: 1:1,000-1:3,000 (detect endogenous protein*)

*: The apparent protein size on WB may be different from the calculated M.W. due to modifications.

Product Data:

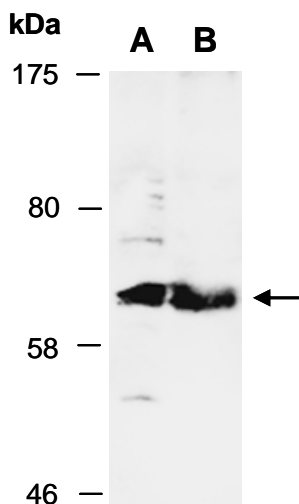


Fig 1. Western blot of (A) total cell extracts from human T47D, (B) nuclear extracts from human HeLa; using KDM4D (C2) (R0912-2) at RT for 2 h.