



Order: (888)-282-5810 (Phone)
(818)-707-0392 (Fax)
order@abiocode.com
Web: www.Abiocode.com

LMNA (C) Antibody, Rabbit Polyclonal

Cat#: R2501-2

Quantity: 100 ul

Predicted | Observed M.W.: 74 kDa

Lot#: Refer to vial

Application: WB

Uniprot ID: P02545

Background:

Prelamin-A/C (LMNA) belongs to the intermediate filament family. Lamins are components of the nuclear lamina, a fibrous layer on the nucleoplasmic side of the inner nuclear membrane, which is thought to provide a framework for the nuclear envelope and may also interact with chromatin. Lamin A and C are present in equal amounts in the lamina of mammals. LMNA plays an important role in nuclear assembly, chromatin organization, nuclear membrane and telomere dynamics.

Other Names:

Prelamin-A/C, 70 kDa lamin, Renal carcinoma antigen NY-REN-32, Lamin-A/C, LMN1

Source and Purity:

Rabbit polyclonal antibodies were produced by immunizing animals with a GST-fusion protein containing the C-terminal region of human LMNA. Antibodies were purified by affinity purification using immunogen.

Storage Buffer and Condition:

Supplied in 1 x PBS (pH 7.4), 100 ug/ml BSA, 40% Glycerol, 0.01% NaN₃. Store at -20 °C. Stable for 6 months from date of receipt.

Species Specificity:

Human, Mouse

Tested Applications:

WB: 1:1,000-1:3,000 (detect endogenous protein*)

*: The apparent protein size on WB may be different from the calculated M.W. due to modifications.

Product Data:

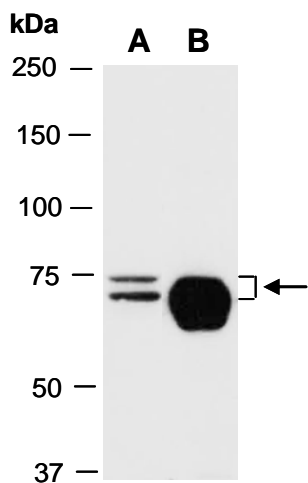


Fig 1. Western blot of total cell extracts from (A) mouse brain, (B) human HeLa; using anti-LMNA (C) (R2501-2) at RT for 2 h.