



Order: (888)-282-5810 (Phone)  
(818)-707-0392 (Fax)  
[order@abiocode.com](mailto:order@abiocode.com)  
Web: [www.Abiocode.com](http://www.Abiocode.com)

---

## PPP2R2C (C) Antibody, Rabbit Polyclonal

**Cat#: R2956-2**

**Quantity: 100 ul**

**Predicted | Observed MW: 52 | 58 kDa**

**Lot#: Refer to vial**

**Application: WB, IP**

**Uniprot ID: Q9Y2T4**

### **Background:**

Serine/threonine-protein phosphatase 2A 55 kDa regulatory subunit B gamma isoform (PPP2R2C) belongs to the phosphatase 2 regulatory subunit B family. Protein phosphatase 2 is one of the four major Ser/Thr phosphatases, and it is implicated in the negative control of cell growth and division. It consists of a common heteromeric core enzyme, which is composed of a catalytic subunit and a constant regulatory subunit that associates with a variety of regulatory subunits. The B regulatory subunit might modulate substrate selectivity and catalytic activity. PPP2R2C is a gamma isoform of the regulatory subunit B55 subfamily. Alternatively spliced transcript variants encoding different isoforms have been identified for this gene [provided by RefSeq].

### **Other Names:**

Serine/threonine-protein phosphatase 2A 55 kDa regulatory subunit B gamma isoform, IMYPNO1, PP2A subunit B isoform B55-gamma, PP2A subunit B isoform PR55-gamma, PP2A subunit B isoform R2-gamma, PP2A subunit B isoform gamma, IMYPNO, MGC33570, PR52, PR55G

### **Source and Purity:**

Rabbit polyclonal antibodies were produced by immunizing animals with a GST-fusion protein containing the C-terminal region of human PPP2R2C. Antibodies were purified by affinity purification using immunogen.

### **Storage Buffer and Condition:**

Supplied in 1 x PBS (pH 7.4), 100 ug/ml BSA, 40% Glycerol, 0.01% NaN<sub>3</sub>. Store at -20 °C. Stable for 6 months from date of receipt.

### **Tested Applications:**

WB: 1:1,000-1:3,000 (detect endogenous protein\*)

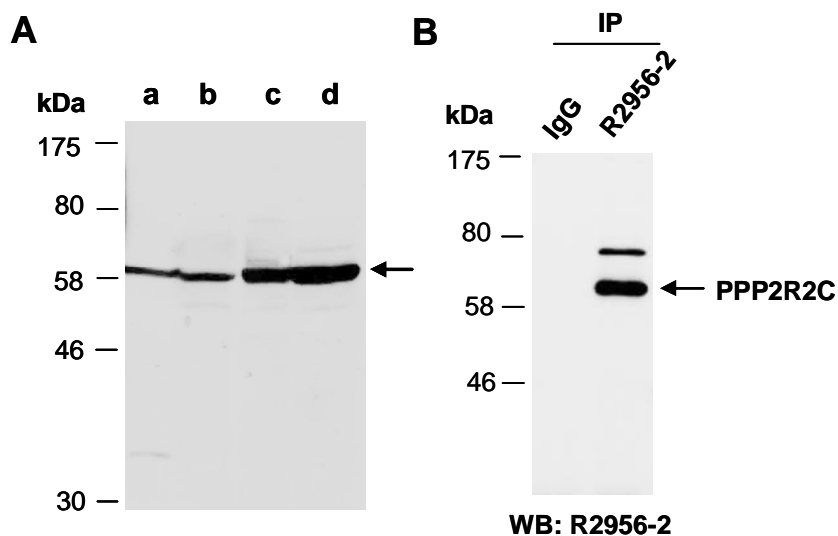
IP: 1:100-1:200

\*: The apparent protein size on WB may be different from the calculated M.W. due to modifications.

**Species Specificity:**

Human, Mouse

**Product Data:**



**Fig 1. (A)** Western blot of total cell extracts from a. mouse brain, b. mouse thymus, c. human Jurkat, d. human HeLa; using anti-PPP2R2C (C) (R2956-2) at RT for 2 h. **(B)** IP-WB. Immunoprecipitation (IP) was performed with human HeLa extracts with IgG or anti-PPP2R2C (C) (R2956-2), followed by WB with the same Ab and Rabbit IgG light chain-specific 2nd antibody.