



Order: (888)-282-5810 (Phone)
(818)-707-0392 (Fax)
order@abiocode.com
Web: www.Abiocode.com

ASMTL (N) Antibody, Rabbit Polyclonal

Cat#: R0205-1

Quantity: 100 ul

Predicted | Observed M.W.: 69 | 75 kDa

Lot#: Refer to vial

Application: WB

Uniprot ID: O95671

Background:

The ASMTL protein has an N-terminus that is similar to the multicopy associated filamentation (maf) protein of *Bacillus subtilis* and to orfE of *Escherichia coli*, while the C-terminus is similar to N-acetylserotonin O-methyltransferase. This *ASMTL* gene is located in the pseudoautosomal region 1 (PAR1) of X and Y chromosomes. Three transcript variants encoding different isoforms have been found for this gene. The function of the ASMTL protein is Unknown. The presence of the putative catalytic domain of S-adenosyl-L-methionine binding argues for a methyltransferase activity (provided by RefSeq and Uniprot)

Other Names:

N-acetylserotonin O-methyltransferase-like protein, acetylserotonin O-methyltransferase-like, ASMTLX, ASMTLY

Source and Purity:

Rabbit polyclonal antibodies were produced by immunizing animals with a GST-fusion protein containing the N-terminal region of human ASMTL. Antibodies were purified by affinity purification using immunogen.

Storage Buffer and Condition:

Supplied in 1 x PBS (pH 7.4), 100 ug/ml BSA, 40% Glycerol, 0.01% NaN₃. Store at -20 °C. Stable for 6 months from date of receipt.

Species Specificity:

Human, Mouse

Tested Applications:

WB: 1:1,000-1:3,000 (detect endogenous protein*)

*: The apparent protein size on WB may be different from the calculated M.W. due to modifications.

Product Data:

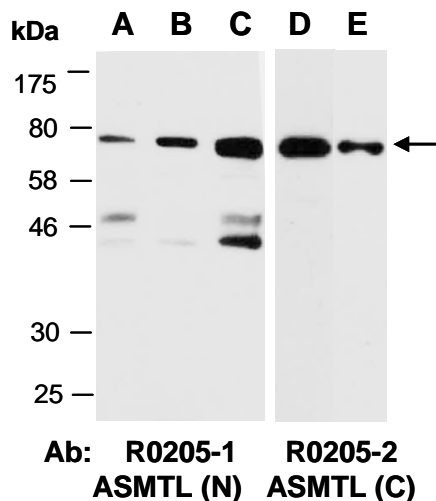


Fig 1. Western blot of total cell extracts from (A) human HeLa, (B) human Jurkat, (C, E) human H1299, (D) mouse brain; using 2 independent Abs against 2 distinct regions of human ASMTL at RT for 2 h.