



Order: (888)-282-5810 (Phone)
(818)-707-0392 (Fax)
order@abiocode.com
Web: www.Abiocode.com

CLK1 (N) Antibody, Rabbit Polyclonal

Cat#: R1471-1

Quantity: 100 ul

Predicted | Observed M.W.: 57 | 65, 57 kDa

Lot#: Refer to vial

Application: WB

Uniprot ID: P49759

Background:

Dual specificity protein kinase CLK1 belongs to the protein kinase superfamily, the CMGC Ser/Thr protein kinase family, and the Lammer subfamily. CLK1 is a dual specificity kinase acting on both serine/threonine and tyrosine-containing substrates. CLK1 phosphorylates: SRSF1, SRSF3 and PTPN1. CLK1 also regulates the alternative splicing of tissue factor (F3) pre-mRNA in endothelial cells and adenovirus E1A pre-mRNA.

Other Names:

Dual specificity protein kinase CLK1, CDC-like kinase 1, CLK

Source and Purity:

Rabbit polyclonal antibodies were produced by immunizing animals with a GST-fusion protein containing the N-terminal region of human CLK1. Antibodies were purified by affinity purification using immunogen.

Storage Buffer and Condition:

Supplied in 1 x PBS (pH 7.4), 100 ug/ml BSA, 40% Glycerol, 0.01% NaN₃. Store at -20 °C. Stable for 6 months from date of receipt.

Species Specificity:

Human

Tested Applications:

WB: 1:1,000-1:3,000 (detect endogenous protein*)

*: The apparent protein size on WB may be different from the calculated M.W. due to modifications.

Product Data:

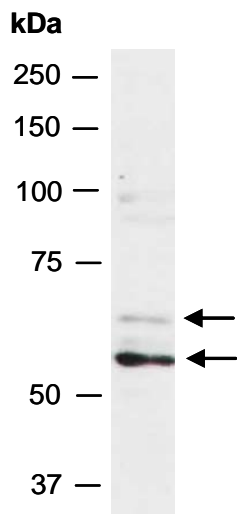


Fig 1. Western blot of total cell extracts from human Jurkat; using anti-CLK1 (N) (R1471-1) at RT for 2 h. This Ab may recognize recognize the different isoforms of CLK1.