



Order: (888)-282-5810 (Phone)
(818)-707-0392 (Fax)
order@abiocode.com
Web: www.Abiocode.com

PLD4 (N) Antibody, Rabbit Polyclonal

Cat#: R1938-1

Quantity: 100 ul

Predicted | Observed M.W.: 56 kDa

Lot#: Refer to vial

Application: WB

Uniprot ID: Q96BZ4

Background:

Phospholipase D4 (PLD4) is a single-pass membrane protein belonging to the phospholipase D family. PLD4 is mainly expressed in the ionized calcium binding adapter molecule 1 (Iba1)-positive microglia in the early postnatal mouse cerebellar white matter. Unlike its family members PLD1 and PLD2, PLD4 exhibits no enzymatic activity for conversion of phosphatidylcholine into choline and phosphatidic acid, and its function is completely unknown. A recent study suggests that the increased PLD4 in the activation process is involved in phagocytosis of activated microglia in the developmental stages and pathological conditions of white matter [Otani Y et al., PLoS ONE 6(11): e27544].

Other Names:

Phospholipase D4, PLD 4, Choline phosphatase 4, Phosphatidylcholine-hydrolyzing phospholipase D4, C14orf175

Source and Purity:

Rabbit polyclonal antibodies were produced by immunizing animals with a GST-fusion protein containing the N-terminal region of mouse PLD4. Antibodies were purified by affinity purification using immunogen.

Storage Buffer and Condition:

Supplied in 1 x PBS (pH 7.4), 100 ug/ml BSA, 40% Glycerol, 0.01% NaN₃. Store at -20 °C. Stable for 6 months from date of receipt.

Species Specificity:

Human

Tested Applications:

WB: 1:1,000-1:3,000 (detect endogenous protein*)

*: The apparent protein size on WB may be different from the calculated M.W. due to modifications.

Product Data:

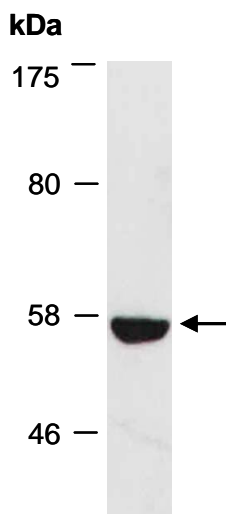


Fig 1. Western blot of total cell extracts from human HeLa; using anti-PLD4 (N) (R1938-1) at RT for 2 h.