



Order: (888)-282-5810 (Phone)
(818)-707-0392 (Fax)
order@abiocode.com
Web: www.Abiocode.com

CDKL5 (C1) Antibody, Rabbit Polyclonal

Cat#: R2109-2

Quantity: 100 ul

Predicted | Observed M.W.: 116 kDa

Lot#: Refer to vial

Application: WB

Uniprot ID: O76039

Background:

Cyclin-dependent kinase-like 5 (CDKL5) belongs to the protein kinase superfamily, the CMGC Ser/Thr protein kinase family, and the CDC2/CDKX subfamily. CDKL5 mediates phosphorylation of MECP2. Chromosomal aberrations involving CDKL5 are found in patients manifesting early-onset seizures and spasms and psychomotor impairment.

Other Names:

Cyclin-dependent kinase-like 5, Serine/threonine-protein kinase 9, STK9

Source and Purity:

Rabbit polyclonal antibodies were produced by immunizing animals with a GST-fusion protein containing the C-terminal region of human CDKL5. Antibodies were purified by affinity purification using immunogen.

Storage Buffer and Condition:

Supplied in 1 x PBS (pH 7.4), 100 ug/ml BSA, 40% Glycerol, 0.01% NaN₃. Store at -20 °C. Stable for 6 months from date of receipt.

Species Specificity:

Human, Mouse

Tested Applications:

WB: 1:1,000-1:3,000 (detect endogenous protein*)

*: The apparent protein size on WB may be different from the calculated M.W. due to modifications.

Product Data:

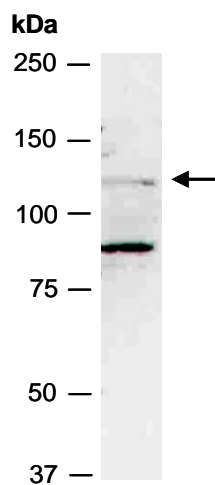


Fig 1. Western blot of total cell extracts from mouse brain; using anti-CDKL5 (C1) (R2109-2) at RT for 2 h.