



Order: (888)-282-5810 (Phone)
(818)-707-0392 (Fax)
order@abiocode.com
Web: www.Abiocode.com

CCT2 (N) Antibody, Rabbit Polyclonal

Cat#: R2178-1

Quantity: 100 ul

Predicted | Observed M.W.: 57 kDa

Lot#: Refer to vial

Application: WB

Uniprot ID: P78371

Background:

T-complex protein 1 subunit beta (CCT2) belongs to the TCP-1 chaperonin family and is a molecular chaperone; assists the folding of proteins upon ATP hydrolysis. As part of the BBS/CCT complex, CCT2 may play a role in the assembly of BBSome, a complex involved in ciliogenesis regulating transports vesicles to the cilia. CCT2 is known to play a role, in vitro, in the folding of actin and tubulin.

Other Names:

T-complex protein 1 subunit beta, TCP-1-beta, CCT-beta, 99D8.1, CCTB

Source and Purity:

Rabbit polyclonal antibodies were produced by immunizing animals with a GST-fusion protein containing the N-terminal region of human CCT2. Antibodies were purified by affinity purification using immunogen.

Storage Buffer and Condition:

Supplied in 1 x PBS (pH 7.4), 100 ug/ml BSA, 40% Glycerol, 0.01% NaN₃. Store at -20 °C. Stable for 6 months from date of receipt.

Species Specificity:

Human, Mouse

Tested Applications:

WB: 1:1,000-1:3,000 (detect endogenous protein*)

*: The apparent protein size on WB may be different from the calculated M.W. due to modifications.

Product Data:

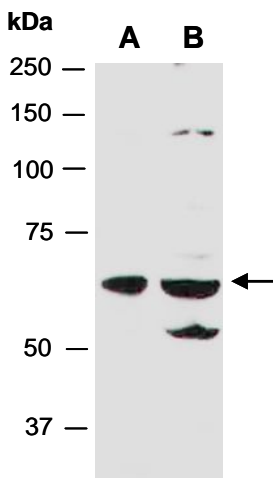


Fig 1. Western blot of total cell extracts from (A) mouse brain, (B) human HeLa; using anti-CCT2 (N) (R2178-1) at RT for 2 h.