



Order: (888)-282-5810 (Phone)  
(818)-707-0392 (Fax)  
[order@abiocode.com](mailto:order@abiocode.com)  
Web: [www.Abiocode.com](http://www.Abiocode.com)

---

## **CCT2 (N) Antibody, Rabbit Polyclonal**

**Cat#: R2178-1b**

**Quantity: 100 ul**

**Predicted | Observed M.W.: 57 kDa**

**Lot#: Refer to vial**

**Application: WB**

**Uniprot ID: P78371**

### **Background:**

T-complex protein 1 subunit beta (CCT2) belongs to the TCP-1 chaperonin family and is a molecular chaperone; assists the folding of proteins upon ATP hydrolysis. As part of the BBS/CCT complex, CCT2 may play a role in the assembly of BBSome, a complex involved in ciliogenesis regulating transports vesicles to the cilia. CCT2 is known to play a role, in vitro, in the folding of actin and tubulin.

### **Other Names:**

T-complex protein 1 subunit beta, TCP-1-beta, CCT-beta, 99D8.1, CCTB

### **Source and Purity:**

Rabbit polyclonal antibodies were produced by immunizing animals with a GST-fusion protein containing the N-terminal region of human CCT2. Antibodies were purified by affinity purification using immunogen.

### **Storage Buffer and Condition:**

Supplied in 1 x PBS (pH 7.4), 100 ug/ml BSA, 40% Glycerol, 0.01% NaN<sub>3</sub>. Store at -20 °C. Stable for 6 months from date of receipt.

### **Species Specificity:**

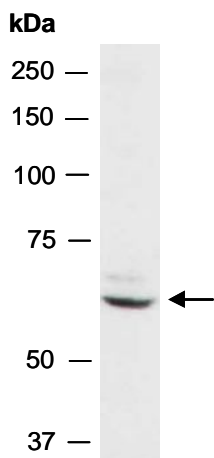
Human

### **Tested Applications:**

WB: 1:1,000-1:3,000 (detect endogenous protein\*)

\*: The apparent protein size on WB may be different from the calculated M.W. due to modifications.

**Product Data:**



**Fig 1.** Western blot of total cell extracts from human HeLa; using anti-CCT2 (N) (R2178-1b) at RT for 2 h.