



Order: (888)-282-5810 (Phone)
(818)-707-0392 (Fax)
order@abiocode.com
Web: www.Abiocode.com

TLR2 (C) Antibody, Rabbit Polyclonal

Cat#: R1129-2a

Quantity: 100 ul

Predicted | Observed M.W.: 90 kDa

Lot#: Refer to vial

Application: WB

Uniprot ID: Q60603

Background:

Toll-like receptor 2 (TLR2) belongs to the Toll-like receptor family. TLR2 cooperates with LY96 to mediate the innate immune response to bacterial lipoproteins and other microbial cell wall components. TLR2 also cooperates with TLR1 or TLR6 to mediate the innate immune response to bacterial lipoproteins or lipopeptides. TLR2 acts via MYD88 and TRAF6, leading to NF-kappa-B activation, cytokine secretion and the inflammatory response. TLR2 may also promote apoptosis in response to lipoproteins. Additionally, TLR2 recognizes mycoplasmal macrophage-activating lipopeptide-2kD (MALP-2), soluble tuberculosis factor (STF), phenol-soluble modulin (PSM) and B.burgdorferi outer surface protein A lipoprotein (OspA-L) cooperatively with TLR6.

Other Names:

Toll-like receptor 2, TIL4, Toll/interleukin-1 receptor-like protein 4, CD282

Source and Purity:

Rabbit polyclonal antibodies were produced by immunizing animals with a GST-fusion protein containing the C-terminal region of human TLR2. Antibodies were purified by affinity purification using immunogen.

Storage Buffer and Condition:

Supplied in 1 x PBS (pH 7.4), 100 ug/ml BSA, 40% Glycerol, 0.01% NaN₃. Store at -20 °C. Stable for 6 months from date of receipt.

Species Specificity:

Human, Mouse

Tested Applications:

WB: 1:1,000-1:3,000 (detect endogenous protein*)

*: The apparent protein size on WB may be different from the calculated M.W. due to modifications.

Product Data:

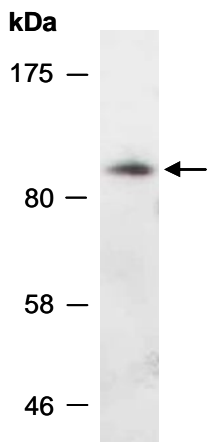


Fig 1. Western blot of total cell extracts from mouse thymus, using anti-TLR2 (C) (R1129-2a) at RT for 2 h.