



Order: (888)-282-5810 (Phone)
(818)-707-0392 (Fax)
order@abiocode.com
Web: www.Abiocode.com

SH3RF1 (C2) Antibody, Rabbit Polyclonal

Cat#: R1264-2

Quantity: 100 ul

Predicted | Observed M.W.: 93 kDa

Lot#: Refer to vial

Application: WB

Uniprot ID: Q7Z6J0

Background:

E3 ubiquitin-protein ligase SH3RF1 belongs to the SH3RF family. SH3RF1 acts as a scaffold protein, contributes to Rac-induced signal transduction such as JNKs (MAPK8 and MAPK9) activation and induces apoptosis. Within a signaling complex, it probably recruits protein kinases such as MAP3K10 or MAP3K11 which are in turn activated leading to the sequential activation of MAP2K4, MAP2K7 and JNKs (MAPK8 and MAPK9). SH3RF1 may be involved in targeting of HIV-1 GAG and GAG-POL polyproteins to the plasma membrane.

Other Names:

E3 ubiquitin-protein ligase SH3RF1, Plenty of SH3s, Protein POSH, RING finger protein 142, SH3 domain-containing RING finger protein 1, SH3 multiple domains protein 2, KIAA1494, POSH, RNF142, SH3MD2

Source and Purity:

Rabbit polyclonal antibodies were produced by immunizing animals with a GST-fusion protein containing the C-terminal region of human SH3RF1. Antibodies were purified by affinity purification using immunogen.

Storage Buffer and Condition:

Supplied in 1 x PBS (pH 7.4), 100 ug/ml BSA, 40% Glycerol, 0.01% NaN₃. Store at -20 °C. Stable for 6 months from date of receipt.

Species Specificity:

Human, Mouse

Tested Applications:

WB: 1:1,000-1:3,000 (detect endogenous protein*)

*: The apparent protein size on WB may be different from the calculated M.W. due to modifications.

Product Data:

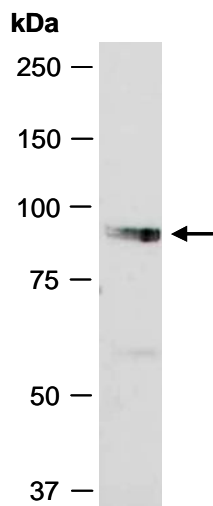


Fig 1. Western blot of total cell extracts from mouse brain, using anti-SH3RF1 (C2) (R1264-2) at RT for 2 h.