



Order: (888)-282-5810 (Phone)
(818)-707-0392 (Fax)
order@abiocode.com
Web: www.Abiocode.com

CALD1 (vPair™) Antibodies

Cat#: R2498-vp2

Lot#: Refer to vial

Predicted | Observed M.W.: 93 | 70 kDa

Uniprot ID: Q05682

Application: WB

Quantity: 50 ul CALD1 (N) (R2498-1b) Rabbit Polyclonal Antibody &
50 ul CALD1 (C) (R2498-2b) Rabbit Polyclonal Antibody

Product Introduction:

vPair™ antibodies represent a pair of fully characterized antibodies that recognize two different regions of a target protein. The product is developed by Abiocode to address whether the signal observed truly represents the protein of interest, an often encountered issue in antibody-based assays. The use of a pair of fully characterized vPair™ antibodies in the same assay can validate signal specificity since vPair™ antibodies recognize two independent epitopes of the same protein. Different sets of vPair™ antibodies are developed at Abiocode to work with specific applications, including antibody arrays, Western blot, IP-Western, ChIP, IHC, and FACS.

Background:

Caldesmon (CALD1) belongs to the caldesmon family and is an actin- and myosin-binding protein implicated in the regulation of actomyosin interactions in smooth muscle and nonmuscle cells (could act as a bridge between myosin and actin filaments). CALD1 stimulates actin binding of tropomyosin which increases the stabilization of actin filament structure. In muscle tissues, CALD1 inhibits the actomyosin ATPase by binding to F-actin. This inhibition is attenuated by calcium-calmodulin and is potentiated by tropomyosin.

Other Names:

Caldesmon, CDM, CAD

Source and Purity:

Rabbit polyclonal antibodies were produced by immunizing animals with GST-fusion proteins containing either the N-terminal [CALD1 (N) (R2498-1b)] or the C-terminal [CALD1 (C) (R2498-2b)] region of human CALD1. Antibodies were purified by affinity purification using immunogen.

Storage Buffer and Condition:

Supplied in 1 x PBS (pH 7.4), 100 ug/ml BSA, 40% Glycerol, 0.01% NaN₃. Store at -20 °C. Stable for 6 months from date of receipt.

**For research use only. Not for therapeutic or diagnostic purposes.
Abiocode, Inc., 29397 Agoura Rd., Ste 106, Agoura Hills, CA 91301**

Species Specificity:

Human, Mouse

Tested Applications:

WB: 1:1,000-1:3,000 (detect endogenous protein*)

*: The apparent protein size on WB may be different from the calculated M.W. due to modifications.

Product Data:

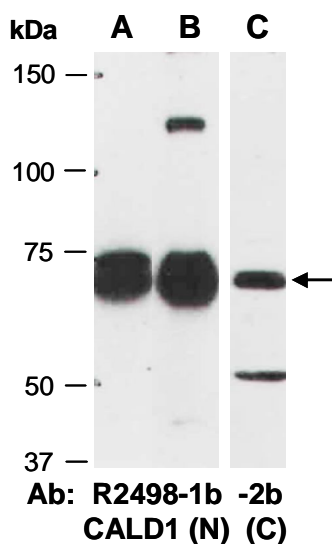


Fig 1. Western blot of total cell extracts from (A) mouse brain, (B, C) human HeLa; using 2 independent Abs against 2 distinct regions of human CALD1 at RT for 2 h. These Abs recognize the 70 kD isoform of CALD1.