



Order: (888)-282-5810 (Phone)  
(818)-707-0392 (Fax)  
[order@abiocode.com](mailto:order@abiocode.com)  
Web: [www.Abiocode.com](http://www.Abiocode.com)

---

## **PMS2 (N) Antibody, Rabbit Polyclonal**

**Cat#: R2819-1**

**Quantity: 100 ul**

**Predicted | Observed M.W.: 96 kDa**

**Lot#: Refer to vial**

**Application: WB**

**Uniprot ID: P54278**

### **Background:**

Mismatch repair endonuclease PMS2 belongs to the DNA mismatch repair MutL/HexB family. PMS2 is a component of the post-replicative DNA mismatch repair system (MMR). PMS2 heterodimerizes with MLH1 to form MutL alpha. DNA repair is initiated by MutS alpha (MSH2-MSH6) or MutS beta (MSH2-MSH6) binding to a dsDNA mismatch, then MutL alpha is recruited to the heteroduplex. Assembly of the MutL-MutS-heteroduplex ternary complex in presence of RFC and PCNA is sufficient to activate endonuclease activity of PMS2. It introduces single-strand breaks near the mismatch and thus generates new entry points for the exonuclease EXO1 to degrade the strand containing the mismatch.

### **Other Names:**

Mismatch repair endonuclease PMS2, DNA mismatch repair protein PMS2, PMS1 protein homolog 2, PMSL2

### **Source and Purity:**

Rabbit polyclonal antibodies were produced by immunizing animals with a GST-fusion protein containing the N-terminal region of human PMS2. Antibodies were purified by affinity purification using immunogen.

### **Storage Buffer and Condition:**

Supplied in 1 x PBS (pH 7.4), 100 ug/ml BSA, 40% Glycerol, 0.01% NaN<sub>3</sub>. Store at -20 °C. Stable for 6 months from date of receipt.

### **Species Specificity:**

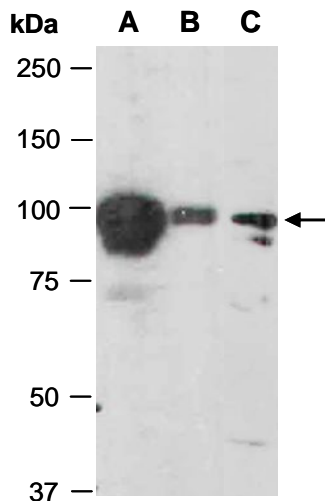
Human, Mouse

### **Tested Applications:**

WB: 1:1,000-1:3,000 (detect endogenous protein\*)

\*: The apparent protein size on WB may be different from the calculated M.W. due to modifications.

**Product Data:**



**Fig 1.** Western blot of total cell extracts from (A) mouse brain, (B) mouse thymus, (C) human Jurkat, using anti-PMS2 (N) (R2819-1) at RT for 2 h.