



Order: (888)-282-5810 (Phone)
(818)-707-0392 (Fax)
order@abiocode.com
Web: www.Abiocode.com

MALT1 (C) Antibody, Rabbit Polyclonal

Cat#: R2918-2

Quantity: 100 ul

Predicted | Observed M.W.: 92 kDa

Lot#: Refer to vial

Application: WB

Uniprot ID: Q9UDY8

Background:

Mucosa-associated lymphoid tissue lymphoma translocation protein 1 (MALT1) belongs to the peptidase C14B family and enhances BCL10-induced activation of NF-kappa-B. MALT1 is involved in nuclear export of BCL10. Additionally, MALT1 binds to TRAF6, inducing TRAF6 oligomerization and activation of its ligase activity. MALT1 has ubiquitin ligase activity, and MALT1-dependent BCL10 cleavage plays an important role in T-cell antigen receptor-induced integrin adhesion.

Other Names:

Mucosa-associated lymphoid tissue lymphoma translocation protein 1, MALT lymphoma-associated translocation, Paracaspase, MLT

Source and Purity:

Rabbit polyclonal antibodies were produced by immunizing animals with a GST-fusion protein containing the C-terminal region of human MALT1. Antibodies were purified by affinity purification using immunogen.

Storage Buffer and Condition:

Supplied in 1 x PBS (pH 7.4), 100 ug/ml BSA, 40% Glycerol, 0.01% NaN₃. Store at -20 °C. Stable for 6 months from date of receipt.

Species Specificity:

Human, Mouse

Tested Applications:

WB: 1:1,000-1:3,000 (detect endogenous protein*)

*: The apparent protein size on WB may be different from the calculated M.W. due to modifications.

Product Data:

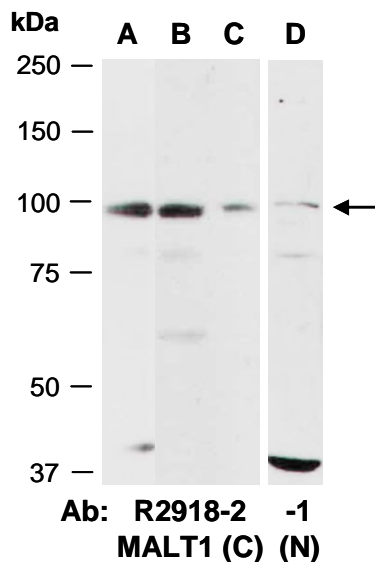


Fig 1. Western blot of total cell extracts from (A) mouse brain, (B, D) human HeLa, (C) human Jurkat; using 2 independent Abs against 2 distinct regions of human MALT1 at RT for 2 h.