



Order: (888)-282-5810 (Phone)
(818)-707-0392 (Fax)
order@abiocode.com
Web: www.Abiocode.com

TRPC6 (M) Antibody, Rabbit Polyclonal

Cat#: R0772-2

Quantity: 100 ul

Predicted | Observed M.W.: 106 | 120 kDa

Lot#: Refer to vial

Application: WB

Uniprot ID: Q9Y210

Background:

Short transient receptor potential channel 6 (TRPC6) belongs to the transient receptor (TC 1.A.4) family, the STpC subfamily, and the TRPC6 sub-subfamily. TRPC6 is thought to form a receptor-activated non-selective calcium permeant cation channel. TRPC6 is probably is operated by a phosphatidylinositol second messenger system activated by receptor tyrosine kinases or G-protein coupled receptors. Also, TRPC6 is activated by diacylglycerol (DAG) in a membrane-delimited fashion, independently of protein kinase C. TRPC6 seems not to be activated by intracellular calcium store depletion.

Other Names:

Short transient receptor potential channel 6, TrpC6, Transient receptor protein 6, TRP-6, TRP6

Source and Purity:

Rabbit polyclonal antibodies were produced by immunizing animals with a GST-fusion protein containing the middle region of human TRPC6. Antibodies were purified by affinity purification using immunogen.

Storage Buffer and Condition:

Supplied in 1 x PBS (pH 7.4), 100 ug/ml BSA, 40% Glycerol, 0.01% NaN₃. Store at -20 °C. Stable for 6 months from date of receipt.

Species Specificity:

Human, Mouse

Tested Applications:

WB: 1:1,000-1:3,000 (detect endogenous protein*)

*: The apparent protein size on WB may be different from the calculated M.W. due to modifications.

Product Data:

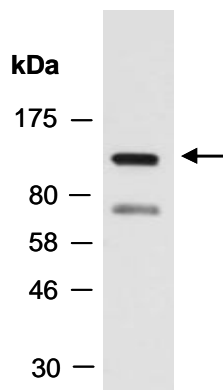


Fig 1. Western blot of total cell extracts from mouse brain, using anti- TRPC6 (M) (R0772-2) at RT for 2 h.