



Order: (888)-282-5810 (Phone)
(818)-707-0392 (Fax)
order@abiocode.com
Web: www.Abiocode.com

SRSF7 (C) Antibody, Rabbit Polyclonal

Cat#: R2071-2

Quantity: 100 ul

Predicted | Observed M.W.: 27 | 30 kDa

Lot#: Refer to vial

Application: WB

Uniprot ID: Q16629

Background:

Serine/arginine-rich splicing factor 7 (SRSF7) belongs to the splicing factor SR family and is required for pre-mRNA splicing. Additionally, SRSF7 can modulate alternative splicing in vitro, and can also represses the splicing of MAPT/Tau exon 10.

Other Names:

Serine/arginine-rich splicing factor 7, Splicing factor 9G8, Splicing factor, arginine/serine-rich 7, SFRS7

Source and Purity:

Rabbit polyclonal antibodies were produced by immunizing animals with a GST-fusion protein containing the C-terminal region of human SRSF7. Antibodies were purified by affinity purification using immunogen.

Storage Buffer and Condition:

Supplied in 1 x PBS (pH 7.4), 100 ug/ml BSA, 40% Glycerol, 0.01% NaN₃. Store at -20 °C. Stable for 6 months from date of receipt.

Species Specificity:

Human

Tested Applications:

WB: 1:1,000-1:3,000 (detect endogenous protein*)

*: The apparent protein size on WB may be different from the calculated M.W. due to modifications.

Product Data:

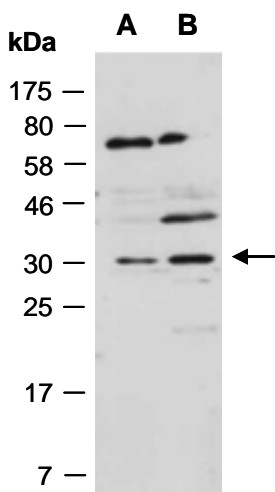


Fig 1. Western blot of total cell extracts from (A) human HeLa, (B) human Jurkat; using anti-SRSF7 (C) (R2071-2) at RT for 2 h.