



Order: (888)-282-5810 (Phone)  
(818)-707-0392 (Fax)  
[order@abiocode.com](mailto:order@abiocode.com)  
Web: [www.Abiocode.com](http://www.Abiocode.com)

---

## PHC1 (C) Antibody, Rabbit Polyclonal

**Cat#:** R2257-2

**Quantity:** 100 ul

**Predicted | Observed M.W.:** 106 | 140 kDa

**Lot#:** Refer to vial

**Application:** WB, IP

**Uniprot ID:** P78364

### **Background:**

Polyhomeotic-like protein 1 (PHC1) is a component of a Polycomb group (PcG) multiprotein PRC1-like complex, a complex class required to maintain the transcriptionally repressive state of many genes, including Hox genes, throughout development. PcG PRC1 complex acts via chromatin remodeling and modification of histones; it mediates monoubiquitination of histone H2A 'Lys-119', rendering chromatin heritably changed in its expressibility.

### **Other Names:**

Polyhomeotic-like protein 1, hPH1, Early development regulatory protein 1, EDR1, PH1

### **Source and Purity:**

Rabbit polyclonal antibodies were produced by immunizing animals with a GST-fusion protein containing the C-terminal region of human PHC1. Antibodies were purified by affinity purification using immunogen.

### **Storage Buffer and Condition:**

Supplied in 1 x PBS (pH 7.4), 100 ug/ml BSA, 40% Glycerol, 0.01% NaN<sub>3</sub>. Store at -20 °C. Stable for 6 months from date of receipt.

### **Species Specificity:**

Human

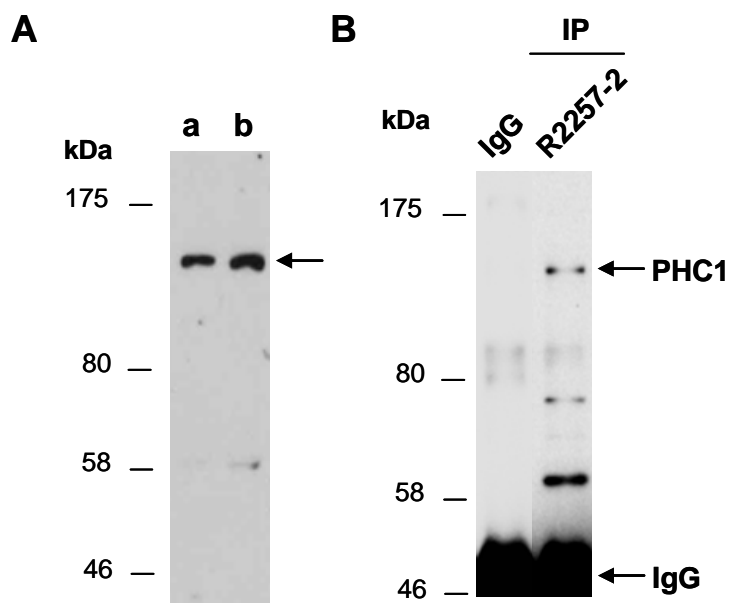
### **Tested Applications:**

WB: 1:1,000-1:3,000 (detect endogenous protein\*)

IP: 1:100-1:200

\*: The apparent protein size on WB may be different from the calculated M.W. due to modifications.

**Product Data:**



**Fig 1. (A)** Western blot of total cell extracts from a. human HeLa and b. human Jurkat, using anti-PHC1 (C) (R2257-2) at RT for 2 h. **(B)** Total extracts from human HeLa were immunoprecipitated (IP) with IgG or anti-PHC1 (C) (R2257-2); followed by WB with the same Ab at RT for 2 h.