



Order: (888)-282-5810 (Phone)
(818)-707-0392 (Fax)
order@abiocode.com
Web: www.Abiocode.com

TLR3 (M) Antibody, Rabbit Polyclonal

Cat#: R1122-1b

Quantity: 100 ul

Predicted | Observed M.W.: 104 kDa

Lot#: Refer to vial

Application: WB

Uniprot ID: O15455

Background:

Toll-like receptor 3 (TLR3) belongs to the Toll-like receptor family and is a key component of innate and adaptive immunity. TLRs (Toll-like receptors) control host immune response against pathogens through recognition of molecular patterns specific to microorganisms. TLR3 is a nucleotide-sensing TLR which is activated by double-stranded RNA, a sign of viral infection. Additionally, TLR3 acts via the adapter TRIF/TICAM1, leading to NF-kappa-B activation, cytokine secretion and the inflammatory response.

Other Names:

Toll-like receptor 3, CD283

Source and Purity:

Rabbit polyclonal antibodies were produced by immunizing animals with a GST-fusion protein containing the middle region of human TLR3. Antibodies were purified by affinity purification using immunogen.

Storage Buffer and Condition:

Supplied in 1 x PBS (pH 7.4), 100 ug/ml BSA, 40% Glycerol, 0.01% NaN₃. Store at -20 °C. Stable for 6 months from date of receipt.

Species Specificity:

Human

Tested Applications:

WB: 1:1,000-1:3,000 (detect endogenous protein*)

*: The apparent protein size on WB may be different from the calculated M.W. due to modifications.

Product Data:

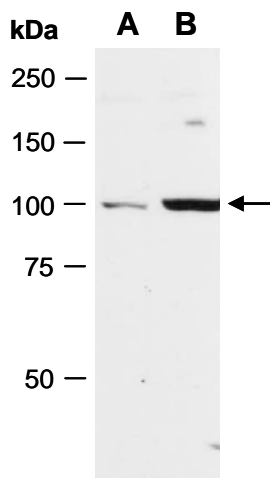


Fig 1. Western blot of total cell extracts from (A) human HeLa, (B) human Jurkat; using anti-TLR3 (M) (R1122-1b) at RT for 2 h.