



Order: (888)-282-5810 (Phone)
(818)-707-0392 (Fax)
order@abiocode.com
Web: www.Abiocode.com

TCF7L1 (C2) Antibody, Rabbit Polyclonal

Cat#: R1440-2

Quantity: 100 ul

Predicted | Observed M.W.: 63 kDa

Lot#: Refer to vial

Application: WB

Uniprot ID: Q9HCS4

Background:

Transcription factor 7-like 1 (TCF7L1) belongs to the TCF/LEF family and participates in the Wnt signaling pathway. TCF7L1 binds to DNA and acts as a repressor in the absence of CTNNB1, and as an activator in its presence. TCF7L1 is necessary for the terminal differentiation of epidermal cells, the formation of keratohyalin granules and the development of the barrier function of the epidermis.

Other Names:

Transcription factor 7-like 1, TCF3, HMG box transcription factor 3, TCF-3

Source and Purity:

Rabbit polyclonal antibodies were produced by immunizing animals with a GST-fusion protein containing the C-terminal region of human TCF7L1. Antibodies were purified by affinity purification using immunogen.

Storage Buffer and Condition:

Supplied in 1 x PBS (pH 7.4), 100 ug/ml BSA, 40% Glycerol, 0.01% NaN₃. Store at -20 °C. Stable for 6 months from date of receipt.

Species Specificity:

Human, Mouse

Tested Applications:

WB: 1:1,000-1:3,000 (detect endogenous protein*)

*: The apparent protein size on WB may be different from the calculated M.W. due to modifications.

Product Data:

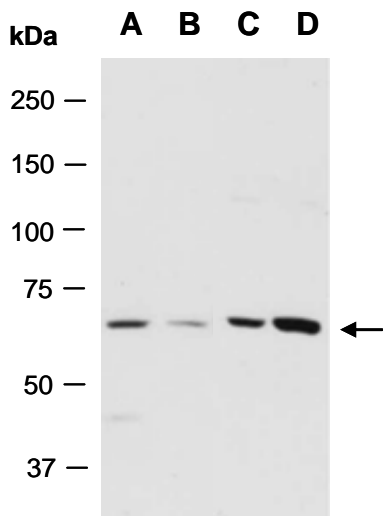


Fig 1. Western blot of total cell extracts from (A) mouse brain, (B) mouse thymus, (C) human HeLa, (D) human Jurkat; using anti- TCF7L1 (C2) (R1440-2) at RT for 2 h.