



Order: (888)-282-5810 (Phone)  
(818)-707-0392 (Fax)  
[order@abiocode.com](mailto:order@abiocode.com)  
Web: [www.Abiocode.com](http://www.Abiocode.com)

---

## PIK3C3 (C) Antibody, Rabbit Polyclonal

Cat#: R1744-2

Quantity: 100 ul

Predicted | Observed M.W.: 102 kDa

Lot#: Refer to vial

Application: WB

Uniprot ID: Q8NEB9

### Background:

Phosphatidylinositol 3-kinase catalytic subunit type 3 (PIK3C3) belongs to the PI3/PI4-kinase family. PIK3C3 is the catalytic subunit of the PI3K complex that mediates formation of phosphatidylinositol 3-phosphate, which plays a key role in initiation and maturation of autophagosomes. PIK3C3 is also involved in the transport of lysosomal enzyme precursors to lysosomes. PIK3C3 is required for the abscission step in cytokinesis and the transport from early to late endosomes. PIK3C3 is ubiquitously expressed, with a highest expression in skeletal muscle.

### Other Names:

Phosphatidylinositol 3-kinase catalytic subunit type 3, PI3-kinase type 3, PI3K type 3, PtdIns-3-kinase type 3, Phosphatidylinositol 3-kinase p100 subunit, Phosphoinositide-3-kinase class 3, hVps34, VPS34

### Source and Purity:

Rabbit polyclonal antibodies were produced by immunizing animals with a GST-fusion protein containing the C-terminal region of human PIK3C3. Antibodies were purified by affinity purification using immunogen.

### Storage Buffer and Condition:

Supplied in 1 x PBS (pH 7.4), 100 ug/ml BSA, 40% Glycerol, 0.01% NaN<sub>3</sub>. Store at -20 °C. Stable for 6 months from date of receipt.

### Species Specificity:

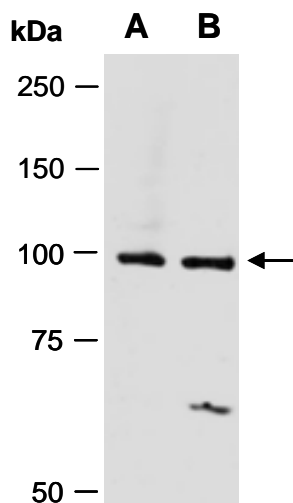
Human

### Tested Applications:

WB: 1:1,000-1:3,000 (detect endogenous protein\*)

\*: The apparent protein size on WB may be different from the calculated M.W. due to modifications.

**Product Data:**



**Fig 1.** Western blot of total cell extracts from (A) human HeLa, (B) human Jurkat; using anti-PIK3C3 (C) (R1744-2) at RT for 2 h.