



Order: (888)-282-5810 (Phone)
(818)-707-0392 (Fax)
order@abiocode.com
Web: www.Abiocode.com

KRT14 (C1) Antibody, Rabbit Polyclonal

Cat#: R1795-2

Quantity: 100 ul

Predicted | Observed M.W.: 52 | 60, 65 kDa

Lot#: Refer to vial

Application: WB

Uniprot ID: P02533

Background:

Keratin, type I cytoskeletal 14 (KRT14) is a member of the keratin family, the most diverse group of intermediate filaments. This gene product, a type I keratin, is usually found as a heterotetramer with two keratin 5 molecules, a type II keratin. Together they form the cytoskeleton of epithelial cells. Mutations in the genes for these keratins are associated with epidermolysis bullosa simplex. At least one pseudogene has been identified at 17p12-p11 [provided by RefSeq].

Other Names:

Keratin, type I cytoskeletal 14, Cytokeratin-14, CK-14, Keratin-14, K14

Source and Purity:

Rabbit polyclonal antibodies were produced by immunizing animals with a GST-fusion protein containing the C-terminal region of human KRT14. Antibodies were purified by affinity purification using immunogen.

Storage Buffer and Condition:

Supplied in 1 x PBS (pH 7.4), 100 ug/ml BSA, 40% Glycerol, 0.01% NaN₃. Store at -20 °C. Stable for 6 months from date of receipt.

Species Specificity:

Human, Mouse

Tested Applications:

WB: 1:1,000-1:3,000 (detect endogenous protein*)

*: The apparent protein size on WB may be different from the calculated M.W. due to modifications.

Product Data:

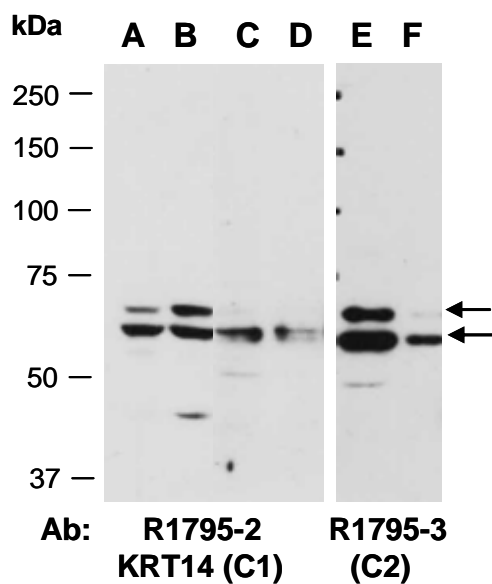


Fig 1. Western blot of total cell extracts from (A) human HeLa, (B) human Jurkat, (C, E) mouse brain, (D, F) mouse thymus; using 2 independent Abs against 2 distinct regions of human KRT14 at RT for 2 h.