



Order: (888)-282-5810 (Phone)
(818)-707-0392 (Fax)
order@abiocode.com
Web: www.Abiocode.com

WIPF1 (C) Antibody, Rabbit Polyclonal

Cat#: R1827-2

Quantity: 100 ul

Predicted | Observed M.W.: 51 kDa

Lot#: Refer to vial

Application: WB

Uniprot ID: O43516

Background:

WAS/WASL-interacting protein family member 1 (WIPF1) belongs to the verprolin family and plays a role in the reorganization of the actin cytoskeleton. WIPF1 contributes with NCK1 and GRB2 in the recruitment and activation of WASL. WIPF1 may participate in regulating the subcellular localization of WASL, resulting in the disassembly of stress fibers in favor of filopodia formation. Furthermore, WIPF1 plays a role in the formation of cell ruffles, and it also plays an important role in the intracellular motility of vaccinia virus by functioning as an adapter for recruiting WASL to vaccinia virus.

Other Names:

WAS/WASL-interacting protein family member 1, Protein PRPL-2, Wiskott-Aldrich syndrome protein-interacting protein, WASP-interacting protein, WASPIP, WIP

Source and Purity:

Rabbit polyclonal antibodies were produced by immunizing animals with a GST-fusion protein containing the C-terminal region of human WIPF1. Antibodies were purified by affinity purification using immunogen.

Storage Buffer and Condition:

Supplied in 1 x PBS (pH 7.4), 100 ug/ml BSA, 40% Glycerol, 0.01% NaN₃. Store at -20 °C. Stable for 6 months from date of receipt.

Species Specificity:

Human, Mouse

Tested Applications:

WB: 1:1,000-1:3,000 (detect endogenous protein*)

*: The apparent protein size on WB may be different from the calculated M.W. due to modifications.

Product Data:

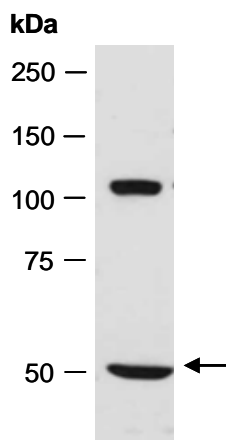


Fig 1. Western blot of total cell extracts from mouse brain, using anti- WIPF1 (C) (R1827-2) at RT for 2 h.