



Order: (888)-282-5810 (Phone)  
(818)-707-0392 (Fax)  
[order@abiocode.com](mailto:order@abiocode.com)  
Web: [www.Abiocode.com](http://www.Abiocode.com)

---

## **CENPI (C) Antibody, Rabbit Polyclonal**

**Cat#: R2020-2**

**Quantity: 100 ul**

**Predicted | Observed M.W.: 87 | 80 kDa**

**Lot#: Refer to vial**

**Application: WB**

**Uniprot ID: Q92674**

### **Background:**

Centromere protein I (CENPI) belongs to the mis6 family and is a component of the CENPA-CAD (nucleosome distal) complex, a complex recruited to centromeres which is involved in assembly of kinetochore proteins, mitotic progression and chromosome segregation. CENPI may be involved in incorporation of newly synthesized CENPA into centromeres via its interaction with the CENPA-NAC complex. CENPI is required for the localization of CENPF, MAD1L1 and MAD2 (MAD2L1 or MAD2L2) to kinetochores. Additionally, CENPI is involved in the response of gonadal tissues to follicle-stimulating hormone.

### **Other Names:**

Centromere protein I, CENP-I, FSH primary response protein 1, Follicle-stimulating hormone primary response protein, Interphase centromere complex protein 19, Leucine-rich primary response protein 1, FSHPRH1, ICEN19, LRPR1

### **Source and Purity:**

Rabbit polyclonal antibodies were produced by immunizing animals with a GST-fusion protein containing the C-terminal region of human CENPI. Antibodies were purified by affinity purification using immunogen.

### **Storage Buffer and Condition:**

Supplied in 1 x PBS (pH 7.4), 100 ug/ml BSA, 40% Glycerol, 0.01% NaN<sub>3</sub>. Store at -20 °C. Stable for 6 months from date of receipt.

### **Species Specificity:**

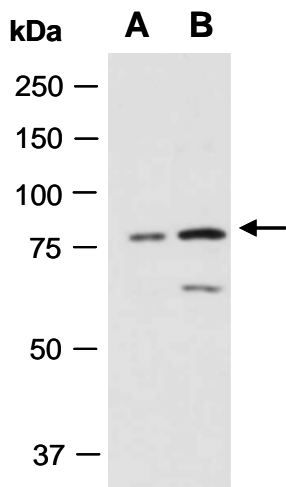
Human

### **Tested Applications:**

WB: 1:1,000-1:3,000 (detect endogenous protein\*)

\*: The apparent protein size on WB may be different from the calculated M.W. due to modifications.

**Product Data:**



**Fig 1.** Western blot of total cell extracts from (A) human HeLa, (B) human Jurkat; using anti-CENPI (C) (R2020-2) at RT for 2 h.