



Order: (888)-282-5810 (Phone)
(818)-707-0392 (Fax)
order@abiocode.com
Web: www.Abiocode.com

SDAD1 (C) Antibody, Rabbit Polyclonal

Cat#: R2031-2

Quantity: 100 ul

Predicted | Observed M.W.: 80 | 75, 90 kDa

Lot#: Refer to vial

Application: WB

Uniprot ID: Q9NVU7

Background:

Protein SDA1 homolog (SDAD1) belongs to the SDA1 family and is required for 60S pre-ribosomal subunits export to the cytoplasm.

Other Names:

Protein SDA1 homolog, NUC130, Nucleolar protein 130, SDA1 domain-containing protein 1, hSDA

Source and Purity:

Rabbit polyclonal antibodies were produced by immunizing animals with a GST-fusion protein containing the C-terminal region of human SDAD1. Antibodies were purified by affinity purification using immunogen.

Storage Buffer and Condition:

Supplied in 1 x PBS (pH 7.4), 100 ug/ml BSA, 40% Glycerol, 0.01% NaN₃. Store at -20 °C. Stable for 6 months from date of receipt.

Species Specificity:

Human, Mouse

Tested Applications:

WB: 1:1,000-1:3,000 (detect endogenous protein*)

*: The apparent protein size on WB may be different from the calculated M.W. due to modifications.

Product Data:

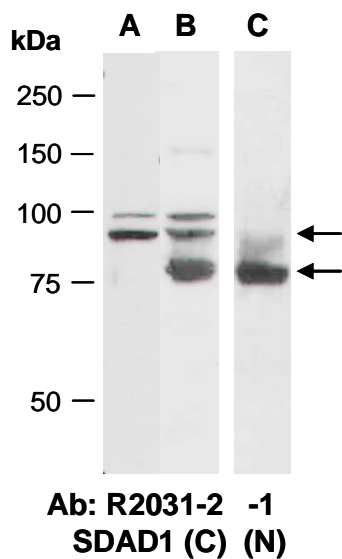


Fig 1. Western blot of total cell extracts from (A) mouse brain, (B, C) human HeLa, using 2 independent Abs against 2 distinct regions of human SDAD1 at RT for 2 h. The 75 kD and 90 kD bands may represent 2 isoforms of SDAD1.