



Order: (888)-282-5810 (Phone)  
(818)-707-0392 (Fax)  
[order@abiocode.com](mailto:order@abiocode.com)  
Web: [www.Abiocode.com](http://www.Abiocode.com)

---

## **RFX3 (C) Antibody, Rabbit Polyclonal**

**Cat#: R2368-2**

**Quantity: 100 ul**

**Predicted | Observed M.W.: 84 kDa**

**Lot#: Refer to vial**

**Application: WB**

**Uniprot ID: P48380**

### **Background:**

Transcription factor RFX3 belongs to the RFX family and is a transcription factor required for ciliogenesis and islet cell differentiation during endocrine pancreas development. RFX3 is essential for the differentiation of nodal monocilia and left-right asymmetry specification during embryogenesis. Additionally, RFX3 is required for the biogenesis of motile cilia by governing growth and beating efficiency of motile cells as well as for ciliated ependymal cell differentiation.

### **Other Names:**

Transcription factor RFX3, Regulatory factor X 3

### **Source and Purity:**

Rabbit polyclonal antibodies were produced by immunizing animals with a GST-fusion protein containing the C-terminal region of human RFX3. Antibodies were purified by affinity purification using immunogen.

### **Storage Buffer and Condition:**

Supplied in 1 x PBS (pH 7.4), 100 ug/ml BSA, 40% Glycerol, 0.01% NaN<sub>3</sub>. Store at -20 °C. Stable for 6 months from date of receipt.

### **Species Specificity:**

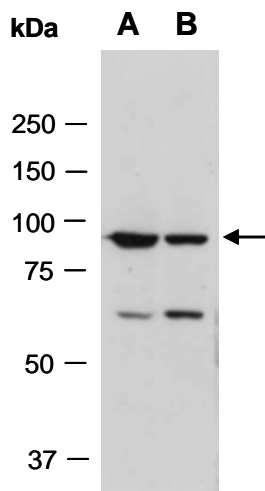
Human

### **Tested Applications:**

WB: 1:1,000-1:3,000 (detect endogenous protein\*)

\*: The apparent protein size on WB may be different from the calculated M.W. due to modifications.

**Product Data:**



**Fig 1.** Western blot of total cell extracts from (A) human HeLa, (B) human Jurkat; using anti-RFX3 (C) (R2368-2) at RT for 2 h.