



Order: (888)-282-5810 (Phone)  
(818)-707-0392 (Fax)  
[order@abiocode.com](mailto:order@abiocode.com)  
Web: [www.Abiocode.com](http://www.Abiocode.com)

---

## SHC4 (N) Antibody, Rabbit Polyclonal

**Cat#:** R1180-1

**Quantity:** 100 ul

**Predicted | Observed M.W.:** 69 kDa

**Lot#:** Refer to vial

**Application:** WB, IP

**Uniprot ID:** Q6S5L8

### **Background:**

SHC4 activates both Ras-dependent and Ras-independent migratory pathways in melanomas. SHC4 contributes to the early phases of agrin-induced tyrosine phosphorylation of CHRN1. SH4 is only expressed in melanomas.

### **Other Names:**

SHCD

### **Source and Purity:**

Rabbit polyclonal antibodies were produced by immunizing animals with a GST-fusion protein containing the N-terminal region of human SHC4. Antibodies were purified by affinity purification using immunogen.

### **Storage Buffer and Condition:**

Supplied in 1 x PBS (pH 7.4), 100 ug/ml BSA, 40% Glycerol, 0.01% NaN<sub>3</sub>. Store at -20 °C. Stable for 6 months from date of receipt.

### **Species Specificity:**

Human

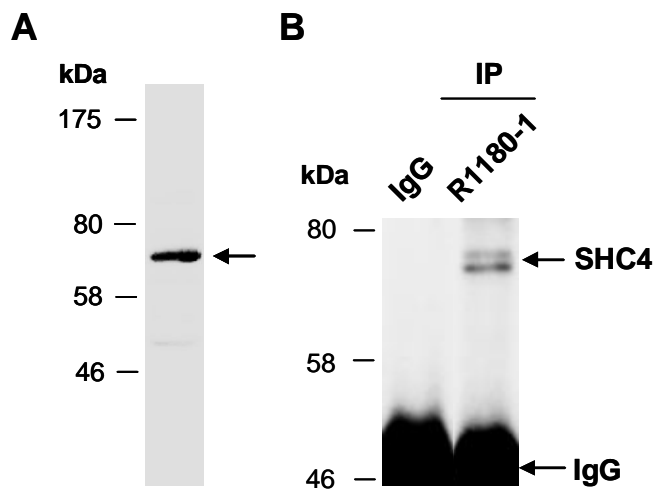
### **Tested Applications:**

WB: 1:1,000-1:3,000 (detect endogenous protein\*)

IP: 1:100-1:200

\*: The apparent protein size on WB may be different from the calculated M.W. due to modifications.

**Product Data:**



**Fig 1. (A)** Western blot of total cell extracts from human Jurkat, using Ab (R1180-1) at RT for 2 h. **(B)** Total extracts from human Jurkat were immunoprecipitated (IP) with IgG or anti-SHC4 (N) (R1180-1); followed by WB with the same Ab at RT for 2 h.