



Order: (888)-282-5810 (Phone)
(818)-707-0392 (Fax)
order@abiocode.com
Web: www.Abiocode.com

ASCL3 (C) Antibody, Rabbit Polyclonal

Cat#: R1904-3

Quantity: 100 ul

Predicted | Observed M.W.: 21 | 44 kDa

Lot#: Refer to vial

Application: WB, IP

Uniprot ID: Q9JJR7

Background:

Achaete-scute homolog 3 (ASCL3) is a class B basic helix-loop-helix (bHLH) transcriptional repressor that is expressed in salivary duct cells that binds to specific sequences of DNA as a dimer with class A bHLH factor. ASCL3 may play a role in gender dimorphism in the salivary glands.

Other Names:

Achaete-scute homolog 3, Class A basic helix-loop-helix protein 42, bHLHa42, bHLH transcriptional regulator Sgn-1, BHLHA42, HASH3, SGN1, ASH-3, hASH3

Source and Purity:

Rabbit polyclonal antibodies were produced by immunizing animals with a GST-fusion protein containing the C-terminal region of mouse ASCL3. Antibodies were purified by affinity purification using immunogen.

Storage Buffer and Condition:

Supplied in 1 x PBS (pH 7.4), 100 ug/ml BSA, 40% Glycerol, 0.01% NaN₃. Store at -20 °C. Stable for 6 months from date of receipt.

Species Specificity:

Human, Mouse

Tested Applications:

WB: 1:1,000-1:3,000 (detect endogenous protein*)

IP: 1:100-1:200

*: The apparent protein size on WB may be different from the calculated M.W. due to modifications.

Product Data:

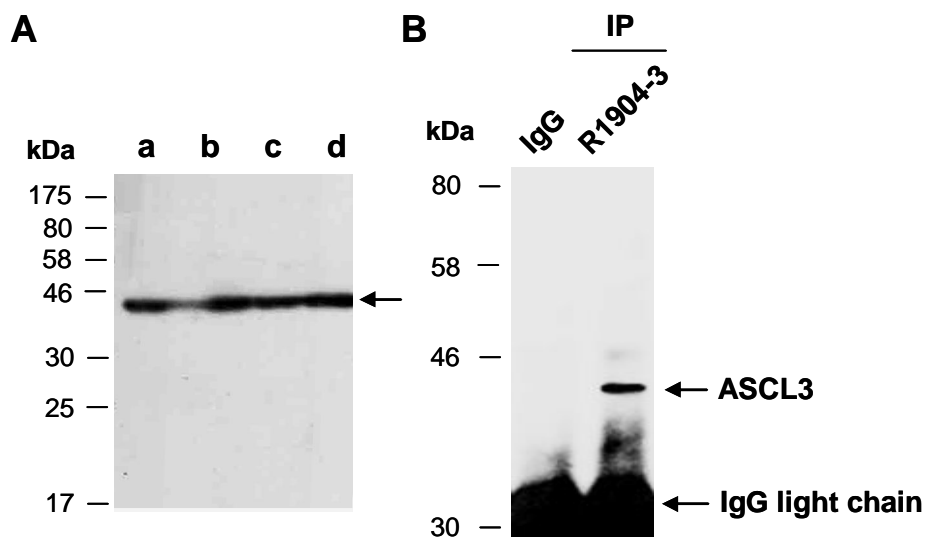


Fig 1. (A) Western blot of total cell extracts from a. mouse brain, b. mouse thymus, c. human HeLa, d. human Jurkat; using anti-ASCL3 (C) (R1904-3) at RT for 2 h. **(B)** Total extracts from mouse thymus were immunoprecipitated (IP) with IgG or anti-ASCL3 (C) (R1904-3); followed by WB with the same Ab and Rabbit IgG light chain-specific 2nd antibody.