



Order: (888)-282-5810 (Phone)
(818)-707-0392 (Fax)
order@abiocode.com
Web: www.Abiocode.com

BMP1 (C1) Antibody, Rabbit Polyclonal

Cat#: R0374-2

Quantity: 100 ul

Predicted | Observed M.W.: 111 | 100 kDa

Lot#: Refer to vial

Application: WB

Uniprot ID: P98063

Background:

Bone morphogenetic protein 1 (BMP1) belongs to the peptidase M12A family and cleaves the C-terminal propeptides of procollagen I, II and III. BMP1 induces cartilage and bone formation. BMP1 may also participate in dorsoventral patterning during early development by cleaving chordin (CHRD). BMP1 is responsible for the proteolytic activation of lysyl oxidase LOX.

Other Names:

Bone morphogenetic protein 1, BMP-1, Mammalian tolloid protein, mTld, Procollagen C-proteinase, PCP

Source and Purity:

Rabbit polyclonal antibodies were produced by immunizing animals with a GST-fusion protein containing the C-terminal region of mouse BMP1. Antibodies were purified by affinity purification using immunogen.

Storage Buffer and Condition:

Supplied in 1 x PBS (pH 7.4), 100 ug/ml BSA, 40% Glycerol, 0.01% NaN₃. Store at -20 °C. Stable for 6 months from date of receipt.

Species Specificity:

Human, Mouse

Tested Applications:

WB: 1:1,000-1:3,000 (detect endogenous protein*)

*: The apparent protein size on WB may be different from the calculated M.W. due to modifications.

Product Data:

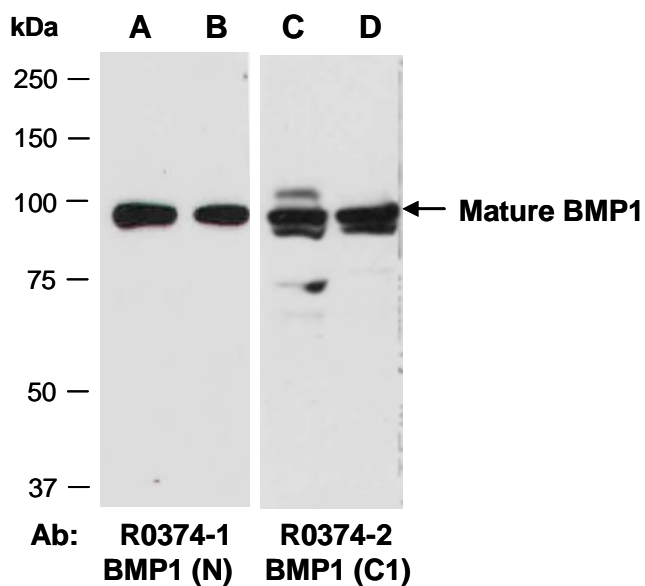


Fig 1. Western blot of total cell extracts from (A, C) human HeLa, (B, D) human Jurkat; using 2 independent Abs against 2 distinct regions of human BMP1 at RT for 2 h.